



Australian Government

FPI11 Forest and Forest Products Training Package

Release 2.1

CONTENTS

| | |
|--|------------|
| FPI11 Forest and Forest Products Training Package | 3 |
| Preliminary Information | 7 |
| List of AQF Qualifications..... | 8 |
| FPI units | 10 |
| Imported units..... | 24 |
| Mapping of Qualifications to the Previous Training Package | 38 |
| Mapping of Units of Competency to the Previous Training Pack..... | 54 |
| Overview | 78 |
| Introduction to FPI11 V2.1..... | 83 |
| Qualifications Frame work..... | 84 |
| Qualifications and Packaging Rules..... | 89 |
| Introduction to the Industry | 94 |
| Skill Sets in this Training Package..... | 96 |
| Qualification Pathways | 98 |
| Assessment Guidelines..... | 101 |
| Competency Standards | 118 |

FPI11 Forest and Forest Products Training Package

Modification History

| FPI11 Modification History | | |
|----------------------------|--------------|---|
| Version | Release date | Comments |
| 2.1 | 30/09/2013 | <p>Mapping updated to reflect non-equivalence of the following qualifications, resulting in 8 current qualifications:</p> <ul style="list-style-type: none"> • FPI20111 • FPI20211 • FPI30111 • FPI30211 • FPI20113 • FPI20213 • FPI30113 • FPI30213 |
| 2 | 27/08/13 | <p>NSSC endorsement for:</p> <ul style="list-style-type: none"> • revision of one non-equivalent qualification due to changes to packaging rules and the removal of one core unit: • FPI60113 Advanced Diploma of Forest Industry Sustainability • revision of 4 non-equivalent qualifications in response to updating superseded core imported unit to (non-equivalent) current version following the addition of new FPI11 units to the qualification elective pool: • FPI20113 Certificate II in Forest Growing and Management • FPI20213 Certificate II in Harvesting and Haulage • FPI30113 Certificate III in Forest Growing and Management • FPI30213 Certificate III in Harvesting and Haulage • addition of five new units: • FPICOT2241 Apply wood and timber product knowledge • FPICOT3261 Transport forestry logs using trucks • FPICOT3262 Transport forestry produce using trucks • FPICOT3263 Maintain and contribute to energy efficiency • FPICOT3264 Build and maintain timber stacks • addition of two changed and equivalent units: • FPIFGM5219 Undertake carbon stock sampling of forests and |

| FPI11 Modification History | | |
|----------------------------|--------------|---|
| Version | Release date | Comments |
| | | <p>plantations</p> <ul style="list-style-type: none"> • FPIFGM6203 Manage sustainable tree inventory. <p>ISC upgrade for:</p> <ul style="list-style-type: none"> • revision of a further 17 existing equivalent qualifications to add and update units in their elective banks: • FPI20311 Certificate II in Sawmilling and Processing • FPI20411 Certificate II in Wood Panel Products • FPI20511 Certificate II in Timber Manufactured Products • FPI20611 Certificate II in Timber Merchandising • FPI20711 Certificate II in Timber Truss and Frame Design and Manufacture • FPI30311 Certificate III in Sawmilling and Processing • FPI30411 Certificate III in Wood Panel Products • FPI30511 Certificate III in Timber Manufactured Products • FPI30611 Certificate III in Timber Merchandising • FPI30711 Certificate III in Sawdoctoring • FPI30811 Certificate III in Woodmachining • FPI30911 Certificate III in Timber Truss and Frame Design and Manufacture • FPI40111 Certificate IV in Forest Operations • FPI40211 Certificate IV in Timber Processing • FPI40311 Certificate IV Timber Truss and Frame Manufacture • FPI40411 Certificate IV in Timber Truss and Frame Design • FPI50111 Diploma of Forest and Forest Products • minor updates to revised equivalent native units: • FPICOT5206A to FPICOT5206B Implement forestry chain of custody certification system • FPICOT5208A to FPICOT5208B Build and maintain community relationships • FPICOT5209A to FPICOT5209B Manage tree harvesting to minimise environmental impact • FPICOT6201A to FPICOT6201B Manage community engagement • FPICOT6202A to FPICOT6202B Develop and manage a forestry chain of custody certification process for the workplace • FPIFGM4203B to FPIFGM4203C Design plantations • FPIFGM6201A to FPIFGM6201B Plan a biochar storage system for carbon capture and storage |

| FPI11 Modification History | | |
|----------------------------|--------------|---|
| Version | Release date | Comments |
| | | <ul style="list-style-type: none"> • FPISAW3220B to FPISAW3220C Maintain wide band saw blades • superseded imported units updated in a range of qualification elective banks • addition of sixteen skill sets: • Carbon Accounting • Finger Jointing Grader Operator • Finger Jointing Moulder Operator • Finger Jointing Plant Operator • Finger Jointing Quality Control Tester • Forestry Log Truck Driver • Forestry Produce Truck Driver • Forest & Wood Product Innovation for Leaders • Forest & Wood Product Innovation for Managers • Supporting Forest & Wood Products Innovation • Managing Change in the Forest and Wood Products Industry • Forest & Wood Products Industry Stakeholder Engagement • Supporting Workplace Engagement in the Forest and Wood Products • Leading Business Development in Forest and Wood Products • Managing Business Development in Forest and Wood Products • Supporting Business Development in Forest and Wood Products • minor editorial errors corrected throughout. |
| 1.1 | 27.11.12 | Spelling, typographical and alignment issues corrected Superseded imported units updated where equivalent |
| 1 | 07.02.12 | Primary release |

Imprint Nov 12

Copyright Statement

© 2012 Commonwealth of Australia.



With the exception of the Commonwealth Coat of Arms, the Department's logo, any material protected by a trade mark and where otherwise noted, all material presented in this document is provided under a Creative Commons Attribution-Non Commercial Works 3.0 Australia licence.

You are free:

- to copy, distribute, display, and perform the work
- to make commercial use of the work

Under the following conditions:

- Attribution - You must give the original author credit.
- No Derivative Works - You may not alter, transform, or build upon this work.

Special Conditions (Waiver)

For the sake of clarity, where the license refers to "the work", in addition to meaning the work in its entirety this term shall also mean "extracts of the work". Extracts of the work carry with it the respective licence, and is thus "partitioned".

The details of the relevant licence conditions are available on the Creative Commons website (www.creativecommons.org.au) as is the full legal code. The document must be attributed as the FPI11 Forest and Forest Products Training Package 2.1 release.

Disclaimer

This work is the result of wide consultations with Australian industry participants. It is a collaborative view and does not necessarily represent the view of DIICCS RTE or any specific body. For the sake of brevity it may omit factors which could be pertinent in particular cases.

While care has been taken in the preparation of this Training Package, DIICCS RTE and the original developer do not warrant that any licensing or registration requirements specified here are either complete or up-to-date for your State or Territory. DIICCS RTE and the original developer do not accept any liability for any damage or loss (including indirect and consequential loss) incurred by any person as a result of relying on the information contained in this Training Package.

The Commonwealth, through the Department of Industry, Innovation, Climate Change, Science, Research and Tertiary Education, does not accept any liability to any person for the information or advice (or the use of such information or advice) which is provided in this material or incorporated into it by reference. The information is provided on the basis that all persons accessing this material undertake responsibility for assessing the relevance and accuracy of its content. No liability is accepted for any information or services which may appear in any other format. No responsibility is taken for any information or services which may appear on any linked websites.

Published by: Forestworks Learning and Skill Development

Release Date: 30 September 2013

Preliminary Information

Important Note to Users

Training Packages are not static documents; they are amended periodically to reflect the latest industry practices and are version controlled. It is essential that the latest version is always used.

Check the version number before commencing training or assessment

This Training Package is Version 2.1 - check whether this is the latest version by going to the Training.gov.au (www.training.gov.au) and locating information about the Training Package. Alternatively, contact *ForestWorks* at www.forestworks.com.au to confirm the latest version number.

Explanation of version number conventions

The primary release Training Package is Version 1. When changes are made to a Training Package, sometimes the version number is changed and sometimes it is not, depending on the extent of the change. When a Training Package is reviewed it is considered to be a new Training Package for the purposes of version control, and is Version 1. Do not confuse the version number with the Training Package's national code (which remains the same during its period of endorsement).

Explanation of the review date

The review date (shown on the title page and in the footer of each page) indicates when the Training Package is expected to be reviewed in the light of changes such as changing technologies and circumstances. The review date is not an expiry date. Endorsed Training Packages and their components remain current until they are reviewed or replaced.

List of AQF Qualifications

| Qualification Code | Title |
|---------------------------|---|
| FPI10111 | Certificate I in Forest and Forest Products |
| FPI20111 | Certificate II in Forest Growing and Management |
| FPI20113 | Certificate II in Forest Growing and Management |
| FPI20211 | Certificate II in Harvesting and Haulage |
| FPI20213 | Certificate II in Harvesting and Haulage |
| FPI20311 | Certificate II in Sawmilling and Processing |
| FPI20411 | Certificate II in Wood Panel Products |
| FPI20511 | Certificate II in Timber Manufactured Products |
| FPI20611 | Certificate II in Timber Merchandising |
| FPI20711 | Certificate II in Timber Truss and Frame Design and Manufacture |
| FPI30111 | Certificate III in Forest Growing and Management |
| FPI30113 | Certificate III in Forest Growing and Management |
| FPI30211 | Certificate III in Harvesting and Haulage |
| FPI30213 | Certificate III in Harvesting and Haulage |
| FPI30311 | Certificate III in Sawmilling and Processing |
| FPI30411 | Certificate III in Wood Panel Products |
| FPI30511 | Certificate III in Timber Manufactured Products |
| FPI30611 | Certificate III in Timber Merchandising |
| FPI30711 | Certificate III in Sawdoctoring |
| FPI30811 | Certificate III in Woodmachining |
| FPI30911 | Certificate II in Timber Truss and Frame Design and Manufacture |
| FPI40111 | Certificate IV in Forest Operations |

| | |
|----------|--|
| FPI40211 | Certificate IV in Timber Processing |
| FPI40311 | Certificate IV in Timber Truss and Frame Manufacture |
| FPI40411 | Certificate IV in Timber Truss and Frame Design |
| FPI50111 | Diploma of Forest and Forest Products |
| FPI50311 | Diploma of Timber Truss and Frame Manufacture |
| FPI50411 | Diploma of Timber Truss and Frame Design |
| FPI60113 | Advanced Diploma of Forest Industry Sustainability |

FPI units

Note: There are no pre-requisite requirements for any FPI unit of competency.

| Unit Code | Unit Title |
|-------------|--|
| FPICOR2201B | Work effectively in the forest and forest products industry |
| FPICOR2202B | Communicate and interact effectively in the workplace |
| FPICOR2203B | Follow environmental care procedures |
| FPICOR2204B | Follow fire prevention procedures |
| FPICOR2205B | Follow OHS policies and procedures |
| FPICOR2207B | Maintain quality and product care |
| FPICOR3201B | Implement safety, health and environment policies and procedures |
| FPICOR3202B | Conduct quality and product care procedures |
| FPICOR3203B | Evaluate fire potential and prevention |
| FPICOR3204B | Visually assess materials |
| FPICOR4201B | Monitor safety, health and environment policies and procedures |
| FPICOR4202B | Monitor and review forestry operations |
| FPICOR4203B | Monitor quality and product care procedures |
| FPICOR6201A | Manage sustainability in the workplace |
| FPICOR6202A | Implement practices to maximise value from wood residues |
| FPICOT2201B | Stack and bind material |
| FPICOT2202B | Rack material |
| FPICOT2203B | Finish products |
| FPICOT2205B | Tail out materials |
| FPICOT2207B | Dress boards and timber |
| FPICOT2208B | Resaw boards and timber |
| FPICOT2209B | Produce finger jointed timber |
| FPICOT2210B | Tally material |

| | |
|-------------|---|
| FPICOT2211B | Produce pointed timber products |
| FPICOT2212B | Grade hardwood sawn and milled products |
| FPICOT2213B | Grade softwood sawn and milled products |
| FPICOT2214B | Grade cypress sawn and milled products |
| FPICOT2215B | Visually stress grade hardwood |
| FPICOT2216B | Visually stress grade softwood |
| FPICOT2217B | Visually stress grade cypress |
| FPICOT2218B | Cross cut materials with a fixed saw |
| FPICOT2219B | Use hand-held tools |
| FPICOT2220B | Select trees for tending operations |
| FPICOT2222B | Produce laminated beams |
| FPICOT2223B | Segregate and sort logs |
| FPICOT2224B | Band edges of panels |
| FPICOT2225B | Chip or flake wood |
| FPICOT2226B | Debark logs mechanically |
| FPICOT2227B | Process orders and despatch products |
| FPICOT2228B | Store materials |
| FPICOT2229B | Dock material to length |
| FPICOT2230B | Assemble products |
| FPICOT2231B | Pack products |
| FPICOT2232B | Cut material to shape using a saw |
| FPICOT2233B | Navigate in forest areas |
| FPICOT2235A | Assess timber for manufacturing potential |
| FPICOT2236 | Fall trees manually (basic) |
| FPICOT2237A | Maintain chainsaws |

| | |
|-------------|---|
| FPICOT2238A | Cut materials with a hand-held chainsaw |
| FPICOT2239A | Trim and cut felled trees |
| FPICOT2240 | Cut materials with a pole saw |
| FPICOT2241 | Apply wood and timber product knowledge |
| FPICOT3201B | Hand sharpen knives and blades |
| FPICOT3202B | Navigate in remote or trackless areas |
| FPICOT3203B | Weigh loads |
| FPICOT3204B | Prepare and interpret sketches and drawings |
| FPICOT3205B | Dress boards using multi-headed machines |
| FPICOT3206B | Cut material using high speed optimiser |
| FPICOT3207B | Set up, operate and maintain finger jointing operations |
| FPICOT3208B | Test strength of joints |
| FPICOT3209B | Set up, operate and maintain end matching operations |
| FPICOT3210B | Sharpen cutting tools |
| FPICOT3211B | Maintain sawdoctoring tools |
| FPICOT3212B | Replace saws, blades and guides |
| FPICOT3213B | Manufacture cutting tools |
| FPICOT3214B | Take off material quantities |
| FPICOT3215B | Swage and shape saw blades |
| FPICOT3216B | Assess and maintain saw performance |
| FPICOT3217B | Assess and maintain cutter performance |
| FPICOT3218B | Quote and interpret from manufactured timber product plans |
| FPICOT3219B | Produce standard truss or frame plans and details using computers |
| FPICOT3220B | Quote and interpret from computerised timber manufactured product plans |

| | |
|-------------|---|
| FPICOT3221B | Rehabilitate tracks, quarries and landings |
| FPICOT3222B | Present forestry information and interpretations programs |
| FPICOT3223B | Grade and mark logs |
| FPICOT3224B | Plan and monitor equipment maintenance |
| FPICOT3225B | Mechanically stress grade timber |
| FPICOT3227B | Receive and measure logs |
| FPICOT3228B | Plane/sand panels |
| FPICOT3229B | Mechanically stress grade panels |
| FPICOT3230B | Operate automated stacking equipment |
| FPICOT3231B | Operate steam boiler |
| FPICOT3232B | Operate heat plant |
| FPICOT3233B | Sharpen and align blades and knives |
| FPICOT3234B | Cut material using CNC sizing machines |
| FPICOT3235B | Machine material using CNC machining and processing centres |
| FPICOT3236B | Coordinate stock control procedures |
| FPICOT3237B | Produce templates |
| FPICOT3238B | Operate a pole saw |
| FPICOT3239B | Create drawings using computer aided design systems |
| FPICOT3240B | Grade heavy structural/engineered products |
| FPICOT3241B | Assemble timber wall frames |
| FPICOT3242B | Lay up timber roof trusses |
| FPICOT3243B | Operate a truss press |
| FPICOT3244B | Cut material to profile |
| FPICOT3245B | Grade, sort and mark material |
| FPICOT3246B | Test heavy structural/engineered products |

| | |
|-------------|---|
| FPICOT3247B | Select timber for forestry operations |
| FPICOT3248A | Dry timber in solar assisted kilns |
| FPICOT3249A | Select timber preservation techniques |
| FPICOT3250A | Prepare timber to meet import/export compliance requirements |
| FPICOT3251A | Promote the carbon benefits of wood products |
| FPICOT3252A | Use environmental care procedures to undertake fire salvage operations |
| FPICOT3253A | Convert timber residue into products for further use |
| FPICOT3254A | Implement environmentally sustainable work practices in the work area/work site |
| FPICOT3255 | Apply silvicultural principles |
| FPICOT3256 | Apply biodiversity protection principles |
| FPICOT3257 | Follow cultural heritage requirements |
| FPICOT3258 | Comply with soil and water protection |
| FPICOT3259 | Operate a four-wheel drive on unsealed roads |
| FPICOT3260 | Recover four-wheel drive vehicles |
| FPICOT3261 | Transport forestry logs using trucks |
| FPICOT3262 | Transport forestry produce using trucks |
| FPICOT3263 | Maintain and contribute to energy efficiency |
| FPICOT3264 | Build and maintain timber stacks |
| FPICOT4201B | Produce complex truss and frame plans and details using computers |
| FPICOT4202B | Design timber structures |
| FPICOT4203B | Plan and coordinate product assembly |
| FPICOT4204B | Schedule and coordinate load shifting |
| FPICOT4205B | Coordinate log debarking operations |
| FPICOT4206B | Plan and coordinate boiler operations |

| | |
|-------------|--|
| FPICOT4207B | Plan and coordinate heat plant operations |
| FPICOT5201B | Implement sustainable forestry practices |
| FPICOT5202B | Manage forestry information and interpretations programs |
| FPICOT5203B | Manage installation and commissioning of equipment |
| FPICOT5204B | Organise enterprise maintenance programs |
| FPICOT5205A | Develop biohazard contingency plans |
| FPICOT5206B | Implement forestry chain of custody certification system |
| FPICOT5207A | Implement sustainability in the workplace |
| FPICOT5208B | Build and maintain community relationships |
| FPICOT5209B | Manage tree harvesting to minimise environmental impact |
| FPICOT6201B | Manage community engagement |
| FPICOT6202B | Develop and manage a forestry chain of custody certification process for the workplace |
| FPICOT6203A | Develop engineered timber products to meet energy efficient building |
| FPICOT6204A | Use carbon accounting to estimate emissions in the workplace |
| FPICOT6205A | Prepare an enterprise carbon management report |
| FPICOT6207A | Develop forest management systems and processes |
| FPIFGM2201B | Collect seed |
| FPIFGM2202B | Prepare seedbed |
| FPIFGM2203B | Plant trees by hand |
| FPIFGM2204B | Plant trees mechanically |
| FPIFGM2205B | Prune trees |
| FPIFGM2206B | Collect data or samples for assessment |
| FPIFGM2207B | Undertake brushcutting operations |
| FPIFGM2209B | Cut, sort and set cuttings |

| | |
|-------------|---|
| FPIFGM2210B | Implement animal pest control procedures |
| FPIFGM2211B | Detect fires |
| FPIFGM2212B | Graft cuttings |
| FPIFGM2213B | Process seed |
| FPIFGM2214B | Maintain visitor sites |
| FPIFGM2215B | Measure trees |
| FPIFGM3201B | Manage seed collection |
| FPIFGM3202B | Extract seed |
| FPIFGM3203B | Conduct an instrument survey |
| FPIFGM3206B | Plan and implement non-commercial thinning operations |
| FPIFGM3207B | Coordinate stem improvement |
| FPIFGM3209B | Construct and maintain forest roads and tracks |
| FPIFGM3210B | Patrol forest |
| FPIFGM3211B | Manage coppice stems |
| FPIFGM3212 | Fall trees manually (intermediate) |
| FPIFGM3213 | Fall trees manually (advanced) |
| FPIFGM3214 | Operate a four-wheel drive in a towing situation |
| FPIFGM3215 | Perform complex four-wheel drive operations |
| FPIFGM4201B | Implement a forest establishment plan |
| FPIFGM4202B | Manage stand health |
| FPIFGM4203C | Design plantations |
| FPIFGM4204B | Conduct a pests and diseases assessment |
| FPIFGM4205B | Monitor regeneration rates |
| FPIFGM4206B | Conduct a wood volume and yield assessment |
| FPIFGM4207B | Conduct a forest site assessment |

| | |
|-------------|--|
| FPIFGM4208B | Plan a quarry |
| FPIFGM4209B | Interpret and use aerial photographs for forest management |
| FPIFGM4210B | Prepare a tender |
| FPIFGM5201B | Plan and manage an inventory program |
| FPIFGM5208B | Manage road construction and maintenance |
| FPIFGM5210A | Manage tending operations in a native forest |
| FPIFGM5211A | Coordinate stand nutrition |
| FPIFGM5212A | Manage genetic resources |
| FPIFGM5213A | Coordinate plantation tending operations |
| FPIFGM5214A | Develop a native forest regeneration plan |
| FPIFGM5215A | Breed trees |
| FPIFGM5216A | Manage coupe planning |
| FPIFGM5217A | Promote plantations as a sustainable form of land use |
| FPIFGM5219 | Undertake carbon stock sampling of forests and plantations |
| FPIFGM6201B | Plan a biochar storage system for carbon capture and storage |
| FPIFGM6203 | Manage sustainable tree inventory |
| FPIHAR2203B | Hook up felled logs using cables (choker) |
| FPIHAR2204B | Perform landing duties (chaser) |
| FPIHAR2205B | Conduct mobile splitting operations |
| FPIHAR2206B | Operate a mobile chipper/mulcher |
| FPIHAR2207A | Trim and cut harvested trees |
| FPIHAR3201B | Monitor log recovery (rigging slinger) |
| FPIHAR3206C | Conduct forwarder operations |
| FPIHAR3207C | Conduct feller buncher operations |
| FPIHAR3208C | Conduct boom delimeter operations |

| | |
|-------------|---|
| FPIHAR3210C | Conduct mechanical processor operations |
| FPIHAR3211B | Operate yarder |
| FPIHAR3213B | Conduct mechanically assisted tree falling operations |
| FPIHAR3214C | Operate a single grip harvester |
| FPIHAR3215C | Operate a heavy production mobile chipper |
| FPIHAR3216A | Conduct forestry operations using crawler tractor |
| FPIHAR3217A | Conduct skidder operations |
| FPIHAR3218A | Conduct loader operations |
| FPIHAR3219A | Conduct excavator operations with grabs |
| FPIHAR3220 | Harvest trees manually (intermediate) |
| FPIHAR3221 | Harvest trees manually (advanced) |
| FPIHAR4201B | Apply tree jacking techniques |
| FPIHAR4202B | Coordinate log recovery (hook tender) |
| FPIHAR4203B | Design log landings and snig tracks |
| FPIHAR4204B | Plan and coordinate fire salvage operations |
| FPIHAR4205B | Implement harvesting plans |
| FPIHAR5201B | Design harvesting plans |
| FPISAW2201B | Grade round poles and debarked logs |
| FPISAW2202B | Sort boards manually |
| FPISAW2203B | Sort boards mechanically |
| FPISAW2204B | Dock boards with mechanical feed |
| FPISAW2205B | Assemble materials using nail plates |
| FPISAW2206B | De-stack seasoning racks |
| FPISAW2207B | Round softwood logs |
| FPISAW2208B | Split wood products |

| | |
|-------------|---|
| FPISAW2209B | Dismantle, transport and assemble hand portable sawmill |
| FPISAW2210B | Prepare for timber treatment operations |
| FPISAW3201B | Treat timber |
| FPISAW3202B | Produce sawn green boards |
| FPISAW3203B | Break down logs |
| FPISAW3204B | Saw flitches and cants |
| FPISAW3205B | Dry hardwood |
| FPISAW3206B | Dry softwood |
| FPISAW3207B | Sharpen band saws |
| FPISAW3208B | Sharpen circular saws |
| FPISAW3209B | Align sawing production systems |
| FPISAW3210B | File and set saws |
| FPISAW3211B | Recondition guides |
| FPISAW3212B | Sharpen tipped circular saws |
| FPISAW3213B | Level and tension circular saws |
| FPISAW3214B | Join band saw blades |
| FPISAW3215B | Screen wood chips |
| FPISAW3216B | Transfer wood chips |
| FPISAW3217B | Hard face saw teeth |
| FPISAW3218B | Replace tungsten tips |
| FPISAW3219B | Replace stellite tips |
| FPISAW3220C | Maintain wide band saw blades |
| FPISAW3221B | Profile saw blanks |
| FPISAW3222B | Recondition band mill wheels |
| FPISAW3223B | Assess wood chips |

| | |
|-----------------|---|
| FPISAW3224B | Coordinate and monitor the wood chip stockpile |
| FPISAW3225B | Maintain frame saw blades |
| FPISAW3226B | Saw logs using CNC optimising systems |
| FPISAW3227B | Select and saw logs in multi-species operations |
| FPISAW3228B | Apply principles of blade design to sawing procedures |
| FPISAW3229B | Operate a portable sawmill |
| FPISAW4201B | Plan and monitor timber treatment plant operations |
| FPISAW4202B | Plan and monitor saw log operations |
| FPISAW4203B | Coordinate timber drying operations |
| FPISAW4204B | Plan and monitor board conversion |
| FPITMM2201 B | Cut material to length and angles |
| FPITMM2202 B | Machine material |
| FPITMM2203 A | Read and interpret timber truss, floor and/or frame fabrication plans |
| FPITMM3201 B | Convert timber |
| FPITMM3202 B | Manufacture using joinery machines |
| FPITMM3203 B | Estimate and cost job |
| FPITMM3204 A | Interpret designs to prepare timber roof truss drawings and documents using computers |
| FPITMM3205 A | Interpret designs to prepare timber floor system drawings and documents using computers |
| FPITMM3206 A | Interpret designs to prepare timber wall frame drawings and documents using computers |
| FPITMM3207 A | Set up timber floor trusses |

| | |
|-----------------|--|
| FPITMM4201 B | Construct prototypes and samples |
| FPITMM4202 B | Diagnose and calculate production costs |
| FPITMM4203 B | Install and commission CNC software |
| FPITMM4204 B | Sample and test products to specifications |
| FPITMM4205 A | Prepare and advise on a broad range of timber roof truss details using computers |
| FPITMM4206 A | Prepare and advise on a broad range of timber floor system details using computers |
| FPITMM4207 A | Prepare and advise on a broad range of timber wall frame details using computers |
| FPITMM5201 B | Assess product feasibility of designs |
| FPITMM5202 B | Develop, trial and evaluate prototypes |
| FPITMM5203 B | Generate and transfer complex computer-aided drawings and specifications |
| FPITMM5204 B | Manage product design |
| FPITMM5205 B | Optimise CNC operations |
| FPITMM5206 B | Plan production |
| FPIWPP2201B | Cut panels |
| FPIWPP2202B | Surface treat raw board |
| FPIWPP2203B | Repair veneer and ply |
| FPIWPP2204B | Repair veneer mechanically |
| FPIWPP2205B | Prepare chip or fibre blends |

| | |
|-------------|---|
| FPIWPP2206B | Prepare veneer for ply |
| FPIWPP2207B | Scarf edges of veneer |
| FPIWPP2208B | Cut veneer |
| FPIWPP2209B | Saw products from continuous ply |
| FPIWPP2210B | Cut panels to profile |
| FPIWPP2211B | Move material by transfer equipment |
| FPIWPP3201B | Produce veneer from debarked logs |
| FPIWPP3202B | Paint panels |
| FPIWPP3203B | Produce fibre from chips |
| FPIWPP3204B | Form board |
| FPIWPP3205B | Match and join veneer |
| FPIWPP3206B | Laminate and veneer board surfaces |
| FPIWPP3207B | Clip veneer |
| FPIWPP3208B | Punch peg holes in panels |
| FPIWPP3209B | Prepare resin and additives |
| FPIWPP3210B | Laminate board |
| FPIWPP3211B | Maintain caul plates and screens |
| FPIWPP3212B | Dry material |
| FPIWPP3213B | Heat treat material |
| FPIWPP3214B | Treat paper |
| FPIWPP3215B | Cut paper |
| FPIWPP3216B | Press material using the daylight process |
| FPIWPP3217B | Process production effluent |
| FPIWPP3218B | Coordinate machining of panels |
| FPIWPP3219B | Blend and test binding mixes |

| | |
|-------------|--|
| FPIWPP3220B | Plan and coordinate panel painting |
| FPIWPP3221B | Trim new panels to size |
| FPIWPP3222B | Press laminated ply |
| FPIWPP3223B | Immunise veneer |
| FPIWPP3224B | Profile sand products |
| FPIWPP3225B | Produce profile sanding shoes and wheels |
| FPIWPP3226B | Operate a continuous press |
| FPIWPP3227B | Vacuum paint |
| FPIWPP3228B | Dry wood flakes |
| FPIWPP3229B | Classify flake |
| FPIWPP3230B | Produce decorative veneers |
| FPIWPP3231B | Produce veneer from prepared flitches |
| FPIWPP4201B | Plan and coordinate panel production |
| FPIWPP4202B | Perform laboratory testing |

Imported units

| Unit Code | Unit Title | Updated in FPI11 V2.1 |
|------------|---|-----------------------|
| AHCBUS502A | Market products and services | |
| AHCARB204A | Undertake standard climbing techniques | |
| AHCARB206A | Undertake stump removal | |
| AHCARB307A | Undertake complex tree climbing | |
| AHCCHM201A | Apply chemicals under supervision | |
| AHCCHM303A | Prepare and apply chemicals | |
| AHCCHM304A | Transport, handle and store chemicals | |
| AHCCHM401A | Minimise risks in the use of chemicals | |
| AHCCHM402A | Plan and implement a chemical use program | |
| AHCEXP303A | Prepare and use explosives | |
| AHCFIR201A | Assist with prescribed burning | |
| AHCILM201A | Maintain cultural places | |
| AHCILM401A | Protect places of cultural significance | |
| AHCINF202A | Install, maintain and repair fencing | |
| AHCINF203A | Maintain properties and structures | |
| AHCINF303A | Plan and construct conventional fencing | |
| AHCIRG204A | Lay irrigation and/or drainage pipes | |
| AHCIRG206A | Maintain pressurised irrigation systems | |
| AHCIRG301A | Implement a maintenance program for an irrigation system | |
| AHCIRG306A | Troubleshoot irrigation systems | |
| AHCIRG406A | Plan on-site irrigation system installation and construction work | |
| AHCIRG503A | Design irrigation, drainage and water treatment | |

| | | |
|------------|---|-----------|
| | systems | |
| AHCLSC302A | Construct landscape features using concrete | |
| AHCLSC304A | Erect timber structures and features | |
| AHCMOM301A | Coordinate machinery and equipment maintenance and repair | |
| AHCMOM402A | Supervise maintenance of machinery and equipment | |
| AHCNAR303A | Implement revegetation works | |
| AHCNAR402A | Plan the implementation of revegetation works | |
| AHCNSY201A | Pot up plants | |
| AHCNSY202A | Tend nursery plants | |
| AHCNSY203A | Undertake propagation activities | Release 2 |
| AHCNSY301A | Maintain nursery plants | |
| AHCNSY302A | Receive and dispatch nursery products | |
| AHCNSY306A | Implement a propagation plan | |
| AHCNSY401A | Plan a growing-on program | |
| AHCNSY402A | Plan a propagation program | |
| AHCPGD402A | Plan a plant establishment program | |
| AHCPHT503A | Manage a controlled growing environment | |
| AHCPMG201A | Treat weeds | |
| AHCPMG202A | Treat plant pests, diseases and disorders | |
| AHCPMG301A | Control weeds | |
| AHCPMG302A | Control plants, pests, diseases and disorders | |
| AHCPMG402A | Develop a pest management action plan within a local area | |
| AHCPMG503A | Develop a strategy for the management of target pests | |

| | | |
|------------|--|--|
| AHCSAW201A | Conduct erosion and sediment control activities | |
| AHCSAW302A | Implement erosion and sediment control measures | |
| AHCWAT502A | Manage water systems | |
| AHCWRK201A | Observe and report on weather | |
| AHCWRK203A | Operate in isolated and remote situations | |
| AHCWRK302A | Monitor weather conditions | |
| AHCWRK304A | Respond to rescue incidents | |
| AHCWRK505A | Manage trial and/or research material | |
| BSBADM311A | Maintain business resources | |
| BSBAUD501B | Initiate a quality audit | |
| BSBCMM301B | Process customer complaints | |
| BSBCMM401A | Make a presentation | |
| BSBCMM402A | Implement effective communication strategies | |
| BSBCRT402A | Collaborate in a creative process | |
| BSBCUS301B | Deliver and monitor a service to customers | |
| BSBCUS401B | Coordinate implementation of customer service strategies | |
| BSBCUS402B | Address customer needs | |
| BSBCUS501C | Manage quality customer service | |
| BSBFIA301A | Maintain financial records | |
| BSBFIM501A | Manage budgets and financial plans | |
| BSBFLM303C | Contribute to effective workplace relationships | |
| BSBFLM305C | Support operational plan | |
| BSBFLM312C | Contribute to team effectiveness | |
| BSBINM201A | Process and maintain workplace information | |

| | | |
|------------|--|------------|
| BSBINM301A | Organise workplace information | |
| BSBINM401A | Implement workplace information system | |
| BSBINM501A | Manage an information or knowledge management system | |
| BSBINN201A | Contribute to workplace innovation | |
| BSBINN501A | Establish systems that support innovation | |
| BSBINN502A | Build and sustain an innovative work environment | |
| BSBINN601B | Manage organisational change | |
| BSBINN801A | Lead innovative thinking and practice | |
| BSBITS401B | Maintain business technology | |
| BSBITU201A | Produce simple word processed documents | |
| BSBITU306A | Design and produce business documents | |
| BSBLED401A | Develop teams and individuals | |
| BSBLED501A | Develop a workplace learning environment | |
| BSBMGT402A | Implement operational plan | |
| BSBMGT403A | Implement continuous improvement | |
| BSBMGT502B | Manage people performance | |
| BSBMGT515A | Manage operational plan | |
| BSBMGT516C | Facilitate continuous improvement | |
| BSBMGT608C | Manage innovation and continuous improvement | |
| BSBMGT616A | Develop and implement strategic plans | |
| BSBMKG501B | Identify and evaluate marketing opportunities | |
| BSBPMG414A | Apply project information management and communications techniques | |
| BSBPMG415A | Apply project risk-management techniques | Supersedes |

| | | |
|------------|--|--------------------------|
| | | BSBPMG407A |
| BSBPMG416A | Apply project procurement procedures | Supersedes BSBPMG408A |
| BSBPMG522A | Undertake project work | Supersedes BSBPMG510A |
| BSBREL701A | Develop and cultivate collaborative partnerships and relationships | |
| BSBRES401A | Analyse and present research information | |
| BSBRES801A | Initiate and lead applied research | |
| BSBRSK401A | Identify risk and apply risk management processes | |
| BSBRSK501B | Manage risk | |
| BSBSMB404A | Undertake small business planning | |
| BSBSMB406A | Manage small business finances | |
| BSBSUS501A | Develop workplace policy and procedures for sustainability | |
| BSBWHS503A | Contribute to the systematic management of WHS risk | Supersedes BSBOHS504B |
| BSBWOR204A | Use business technology | |
| BSBWOR301B | Organise personal work priorities and development | |
| BSBWOR401A | Establish effective workplace relationships | |
| BSBWOR402A | Promote team effectiveness | |
| BSBWOR501B | Manage personal work priorities and professional development | |
| BSBWOR502B | Ensure team effectiveness | |
| BSBWRK506A | Coordinate research and analysis | |
| BSBWRT401A | Write complex documents | |
| CHCPOL403C | Undertake research activities | |

| | | |
|--------------|---|------------------------|
| CPCCBC4001A | Apply building codes and standards to the construction process for low-rise building projects | |
| CPCCBC4004A | Identify and produce estimated costs for building and construction projects | |
| CPCCBC4005A | Produce labour and material schedules for ordering | |
| CPCCBC4014A | Prepare simple building sketches and drawings | |
| CPCCBC4024A | Resolve business disputes | |
| CPCCCA3006B | Erect roof trusses | Supersedes CPCCCA3006A |
| CPCCCM1015A | Carry out measurements and calculations | Supersedes CPCCCM1005A |
| CPCCLDG3001A | Licence to perform dogging | |
| CPCCOHS2001A | Apply OHS requirements, policies and procedures in the construction industry | |
| CPCCSV5010A | Interact with clients in a regulated environment | |
| CPCCSV5011A | Apply building codes and standards to residential buildings | |
| CPCCSV5012A | Assess timber-framed designs for one and two storey buildings | |
| CPCCSV5015A | Assess structural requirements for domestic scale buildings | |
| CPCSUS4001A | Implement and monitor environmentally sustainable work practices | |
| CPPSEC3007A | Maintain security of environment | |
| CUVDES405A | Research and apply techniques in spatial design | |
| HLTFA301C | Apply first aid | |
| HLTFA302C | Provide first aid in remote situation | |
| HLTFA311A | Apply first aid | Supersedes HLTFA301C |

| | | |
|--------------|---|----------------------|
| HLTFA403C | Manage first aid in the workplace | |
| HLTFA412A | Apply advanced first aid | Supersedes HLTFA402C |
| ICAICT308A | Use advanced features of computer applications | |
| ICTSUS7235A | Use ICT to improve sustainability outcomes | |
| LGACOM401A | Administer contracts | Release 2 |
| LGACOM409A | Prepare tender documentation | Release 2 |
| LGACOM502B | Devise and conduct community consultations | Release 2 |
| LGAEHRR504C | Implement public environmental health education programs | Release 2 |
| LGAPLEM404A | Prepare and present geographic information systems data | Release 2 |
| LGAPLEM612B | Protect heritage and cultural asset | Release 2 |
| LGAWORK212A | Perform field support duties in a roadwork environment | Release 2 |
| LMFGG2008C | Glaze reglaze residential windows and doors | |
| MEM05004C | Perform routine oxyacetylene welding | |
| MEM05006C | Perform brazing and/or silver soldering | |
| MEM05049B | Perform routine gas tungsten arc welding | |
| MEM05050B | Perform routine gas metal arc welding | |
| MEM18011C | Shut down and isolate machines/equipment | Release 2 |
| MSACMT630A | Optimise cost of product | |
| MSACMT631A | Undertake value analysis of product costs in terms of customer requirements | |
| MSACMT671A | Develop and manage sustainable environmental practices | |
| MSAPMOPS404A | Co-ordinate maintenance | |
| MSAPMSUP390A | Use structured problem solving tools | |

| | | |
|------------|---|-----------------------|
| MSS015002A | Develop strategies for more sustainable use of resources | |
| MSS015003A | Analyse product lifecycle for sustainability | |
| MSS015011A | Conduct a sustainability energy audit | |
| MSS402001A | Apply competitive systems and practices | |
| MSS402030A | Apply cost factors to work practices | |
| MSS402050A | Monitor process capability | |
| MSS402051A | Apply quality standards | |
| MSS402060A | Use planning software systems in operations | Supersedes MSACMT260A |
| MSS403001A | Implement competitive systems and practices | |
| MSS403010A | Facilitate change in an organisation implementing competitive systems and practices | |
| MSS403032A | Analyse manual handling processes | |
| MSS403051A | Mistake proof an operational process | |
| MSS404050A | Undertake process capability improvements (*Prerequisite: MSS404052A Apply statistics to operational processes) | Supersedes MSACMT450A |
| MSS404052A | Apply statistics to operational processes | |
| MSS404060A | Facilitate the use of planning software systems in a work area or team | Supersedes MSACMT460A |
| MSS404082A | Assist in implementing a proactive maintenance strategy | |
| MSS405001A | Develop competitive systems and practices for an organisation | |
| MSS405004A | Develop business plans in an organisation implementing competitive systems and practices | |
| MSS405062A | Develop a documentation control strategy for an organisation | |

| | | |
|------------|--|-----------------------|
| MSS405070A | Develop and manage sustainable energy practices | |
| MSS405075A | Facilitate the development of a new product | Supersedes MSACMT675A |
| PSPGOV521A | Collect statistical data | |
| PSPPOL603A | Manage policy implementation | Release 3 |
| PSPREG603A | Manage and lead inspection and monitoring programs | Release 3 |
| PUACOM012B | Liaise with media at a local level | |
| PUAEQU001B | Prepare, maintain and test response equipment | |
| PUAFIR203B | Respond to urban fire OR | |
| PUAFIR204B | Respond to wildfire (unit has PUAFIR215 Prevent injury as a prerequisite) | Release 2 |
| PUAFIR205B | Respond to aviation incident (specialist) | |
| PUAFIR209B | Work safely around aircraft | Release 3 |
| PUAFIR215 | Prevent injury | Supersedes PUAFIR201B |
| PUAFIR303B | Suppress wildfire (unit has PUAFIR204B Respond to wildfire as a prerequisite) | Release 2 |
| PUAFIR309B | Operate pumps | Release 2 |
| PUAFIR406B | Develop prescribed burning plans (unit has PUAFIR303B Suppress wildfire as a prerequisite) | |
| PUAFIR407B | Conduct prescribed burning (unit has PUAFIR303B Suppress wildfire as a prerequisite) | |
| PUAFIR501B | Conduct fire investigation and analysis activities (unit has PUALAW001B Protect and preserve incident scene as a prerequisite) | Release 3 |
| PUAFIR509B | Implement prevention strategies | Release 3 |
| PUALAW001B | Protect and preserve incident scene | Release 2 |

| | | |
|-------------|--|-----------|
| PUALAW002B | Conduct initial investigation at incident scene | Release 2 |
| PUAOHS002B | Maintain safety at an incident scene | Release 3 |
| PUAOPE001B | Supervise response | |
| PUAOPE002B | Operate communications systems and equipment | |
| PUAOPE005B | Manage a multi-team response | |
| PUAOPE007B | Command agency personnel within a multi-agency emergency response (unit has PUAOPE001B Supervise response as a prerequisite) | Release 3 |
| PUATEA001B | Work in a team | Release 2 |
| PUATEA002B | Work autonomously | Release 3 |
| RIIHAN308A | Load and unload plant | |
| RIIMPO315A | Conduct tractor operations | |
| RIIMPO317A | Conduct roller operations | |
| RIIMPO318B | Conduct civil construction skid steer loader operations | |
| RIIMPO319A | Conduct backhoe/loader operations | |
| RIIMPO320B | Conduct civil construction excavator operations | |
| RIIMPO321B | Conduct civil construction wheeled front end loader operations | |
| RIIMPO322A | Conduct civil construction tracked front end loader operations | |
| RIIMPO323A | Conduct civil construction dozer operations | |
| RIIMPO324A | Conduct civil construction grader operations | |
| RIIOHS205A | Control traffic with stop-slow bat | |
| RIIVEH304B | Conduct tip truck operations | |
| SIRRRPK010A | Recommend home and home improvement products and services | Release 2 |

| | | |
|-------------|---|-----------|
| SIRRRPK214 | Recommend specialised products and services | |
| SIRXADM001A | Apply retail office procedures | Release 2 |
| SIRXCCS201 | Apply point-of-sale handling procedures | |
| SIRXCCS202 | Interact with customers | |
| SIRXFIN002A | Perform retail finance duties | Release 2 |
| SIRXFIN003A | Produce financial reports | Release 2 |
| SIRXFIN004A | Manage financial resources | Release 2 |
| SIRXFIN201 | Balance and secure point-of-sale terminal | |
| SIRXICT001A | Operate retail technology | Release 2 |
| SIRXICT303 | Operate retail information technology systems | |
| SIRXINV001A | Perform stock control procedures | Release 2 |
| SIRXINV002A | Maintain and order stock | Release 2 |
| SIRXINV004A | Buy merchandise | |
| SIRXMER004A | Manage merchandise and store presentation | |
| SIRXMER201 | Merchandise products | |
| SIRXMER202 | Plan, create and maintain displays | |
| SIRXMER303 | Coordinate merchandise presentation | |
| SIRXMER406 | Monitor in-store visual merchandising display | |
| SIRXQUA001A | Develop innovative ideas at work | |
| SIRXRSK001A | Minimise theft | |
| SIRXRSK002A | Maintain store security | Release 2 |
| SIRXRSK003A | Apply store security systems and procedures | Release 2 |
| SIRXSLS002A | Advise on products and services | |
| SIRXSLS201 | Sell products and services | |
| SIRXSLS303 | Build relationships with customers | |

| | | |
|------------|---|---------------------------|
| SIRXSLS304 | Coordinate sales performance | |
| SIRXSLS406 | Manage sales and service delivery | |
| SIRXWHS302 | Maintain store safety | |
| SITTPPD402 | Develop interpretive activities | Supersedes SITTPPD005A |
| TAEASS401B | Plan assessment activities and processes | |
| TAEASS402B | Assess competence | |
| TAEASS403B | Participate in assessment validation | |
| TAEDEL301A | Provide work skill instruction | |
| TAEDEL401A | Plan, organise and deliver group-based learning | |
| TAEDEL402A | Plan, organise and facilitate learning in the workplace | |
| TAEDES401A | Design and develop learning programs | |
| TAEDES402A | Use training packages and accredited courses to meet client needs | |
| TLIA2012A | Pick and process orders | |
| TLIA3018A | Organise despatch operations | |
| TLIC2002A | Drive light rigid vehicle | |
| TLIC3003A | Drive medium rigid vehicle | |
| TLIC3004A | Drive heavy rigid vehicle | |
| TLIC3005A | Drive heavy combination vehicle | |
| TLIC3063A | Operate vehicle carrying special loads | |
| TLIC4006A | Drive multi-combination vehicle | |
| TLID1001A | Shift materials safely using manual handling methods | |
| TLID2004A | Load and unload goods/cargo | |
| TLID2010A | Operate a forklift | |

| | | |
|-------------|---|------------------------|
| TLID2012A | Operate specialised load shifting equipment | |
| TLID2013A | Move materials mechanically using automated equipment | |
| TLID2047A | Prepare cargo for transfer with slings | |
| TLID3011A | Conduct specialised forklift operations | |
| TLID3014A | Load and unload vehicles carrying special loads | |
| TLID3033A | Operate a vehicle-mounted loading crane | |
| TLID3035A | Operate a boom type elevating work platform | |
| TLID3036A | Lift and move load using a mobile crane | |
| TLID3043A | Shift loads using gantry equipment | |
| TLID4032A | Plan and conduct specialised lift | |
| TLIE3002A | Estimate/calculate mass, area and quantify dimensions | |
| TLIE4006A | Collect, analyse and present workplace data and information | |
| TLIF1002B | Conduct housekeeping activities | |
| TLIF2010A | Apply fatigue management strategies | |
| TLIF4007A | Implement and coordinate accident-emergency procedures | |
| TLIH2001A | Interpret road maps and navigate pre-determined routes | |
| TLILIC2001A | Licence to operate a forklift truck | |
| TLILIC2016B | Licence to drive a heavy rigid vehicle | Supersedes TLILIC2016A |
| TLILIC3017B | Licence to drive a heavy combination vehicle | Supersedes TLILIC3017A |
| TLILIC3018B | Licence to drive a multi-combination vehicle | Supersedes TLILIC3018A |

| | | |
|-----------|--|--|
| TLIR4002A | Source goods/services and evaluate contractors | |
|-----------|--|--|

Mapping of Qualifications to the Previous Training Package

| Mapping of qualifications to the previous Training Package | | | |
|--|---|--|-----|
| FPI11 V2.1 | Relationship to FPI11 V1.1 | Comment in relation to the previous iteration of the Training Package | E/N |
| FPI20111 Certificate II in Forest Growing and Management | FPI20111 Certificate II in Forest Growing and Management | <p>New unit added to Group B elective pool:</p> <ul style="list-style-type: none"> • FPICOT3263 Maintain and contribute to energy efficiency <p>Updated equivalent imported unit in Group A elective pool:</p> <ul style="list-style-type: none"> • PUAFIR215 Prevent injury <p>Imported units updated to current release:</p> <ul style="list-style-type: none"> • AHCNSY203A • LGAWORK212A • PUAFIR204B • PUAFIR209B • PUALAW001B • PUATEA001B | E |
| FPI20211 Certificate II in Harvesting and Haulage | FPI20211 Certificate II in Harvesting and Haulage | <p>New unit added to Group B elective pool:</p> <ul style="list-style-type: none"> • FPICOT3263 Maintain and contribute to energy efficiency <p>Updated equivalent imported unit in Group A elective pool:</p> <ul style="list-style-type: none"> • PUAFIR215 Prevent injury <p>Imported units updated to current release:</p> <ul style="list-style-type: none"> • PUAFIR204B • PUALAW001B • PUATEA001B | E |
| FPI30111 Certificate III in Forest Growing and Management | FPI30111 Certificate III in Forest Growing and Management | <p>New unit added to Group B elective pool:</p> <ul style="list-style-type: none"> • FPICOT3263 Maintain and contribute to energy | E |

| Mapping of qualifications to the previous Training Package | | | |
|---|-----------------------------------|--|------------|
| FPI11 V2.1 | Relationship to FPI11 V1.1 | Comment in relation to the previous iteration of the Training Package | E/N |
| | | <p>efficiency</p> <p>Updated non-equivalent imported unit in Group B elective pool:</p> <ul style="list-style-type: none"> • HLTFA412A Apply advanced first aid (unit has HLTFA311A Apply first aid as a prerequisite) <p>Imported units updated to current release:</p> <ul style="list-style-type: none"> • PUAFIR303B • PUAFIR309B • PUALAW002B • PUAOHS002B • PUATEA002B | |

| Mapping of qualifications to the previous Training Package | | | |
|---|--|---|------------|
| FPI11 V2.1 | Relationship to FPI11 V1.1 | Comment in relation to the previous iteration of the Training Package | E/N |
| FPI30211 Certificate III in Harvesting and Haulage | FPI30211 Certificate III in Harvesting and Haulage | <p>Packaging rules for special requirements for log truck driver descriptor updated.</p> <p>Three new units added to the elective pool:</p> <ul style="list-style-type: none"> • FPICOT3261 Transport forestry logs using trucks (replacing non-equivalent superseded elective FPICOT3226B Shift forestry logs using trucks) • FPICOT3262 Transport forestry produce using trucks • FPICOT3263 Maintain and contribute to energy efficiency <p>Elective units updated to current equivalent version:</p> <ul style="list-style-type: none"> • TLILIC2016B Licence to drive a heavy rigid vehicle • TLILIC3017B Licence to drive a heavy combination vehicle • TLILIC3018B Licence to drive a multi combination vehicle <p>Updated non-equivalent imported unit in Group B elective pool:</p> <ul style="list-style-type: none"> • HLTF412A Apply advanced first aid (unit has HLTF311A Apply first aid as a prerequisite) <p>Imported units updated to current release:</p> <ul style="list-style-type: none"> • PUAFIR303B • PUAFIR309B | E |

| Mapping of qualifications to the previous Training Package | | | |
|---|--|--|------------|
| FPI11 V2.1 | Relationship to FPI11 V1.1 | Comment in relation to the previous iteration of the Training Package | E/N |
| | | <ul style="list-style-type: none"> • PUAOHS002B • PUATEA002B | |
| Mapping of qualifications to the previous Training Package | | | |
| FPI11 V2 | Relationship to FPI11 V1.1 | Comment in relation to the previous iteration of the Training Package | E/N |
| FPI10111 Certificate I in Forest and Forest Products | FPI10111 Certificate I in Forest and Forest Products | Imported unit updated to current release: <ul style="list-style-type: none"> • PUATEA001B | E |
| FPI20113 Certificate II in Forest Growing and Management | FPI20111 Certificate II in Forest Growing and Management | Core non-equivalent imported unit updated to current: <ul style="list-style-type: none"> • HLTF311A Apply first aid New unit added to Group B elective pool: <ul style="list-style-type: none"> • FPICOT3263 Maintain and contribute to energy efficiency Updated equivalent imported unit in Group A elective pool: <ul style="list-style-type: none"> • PUAFIR215 Prevent injury Imported units updated to current release: <ul style="list-style-type: none"> • AHCNSY203A • LGAWORK212A • PUAFIR204B • PUAFIR209B • PUALAW001B • PUATEA001B | N |
| FPI20213 Certificate II in Harvesting and Haulage | FPI20211 Certificate II in Harvesting and Haulage | Core non-equivalent imported unit updated to current: <ul style="list-style-type: none"> • HLTF311A Apply first aid New unit added to Group B elective pool: <ul style="list-style-type: none"> • FPICOT3263 Maintain and contribute to energy efficiency Updated equivalent imported unit in Group A elective pool: | N |

| Mapping of qualifications to the previous Training Package | | | |
|---|--|---|------------|
| FPI11 V2.1 | Relationship to FPI11 V1.1 | Comment in relation to the previous iteration of the Training Package | E/N |
| | | <ul style="list-style-type: none"> PUAFIR215 Prevent injury Imported units updated to current release: <ul style="list-style-type: none"> PUAFIR204B PUALAW001B PUATEA001B | |
| FPI20311 Certificate II in Sawmilling and Processing | FPI20311 Certificate II in Sawmilling and Processing | New unit added to Group A elective pool: <ul style="list-style-type: none"> FPICOT2241 Apply wood and timber product knowledge Two new units added to Group B elective pool: <ul style="list-style-type: none"> FPICOT3263 Maintain and contribute to energy efficiency FPICOT3264 Build and maintain timber stacks Updated non-equivalent imported unit in Group B elective pool: <ul style="list-style-type: none"> HLTFA311A Apply first aid Imported unit updated to current release: <ul style="list-style-type: none"> MEM18011C | E |
| FPI20411 Certificate II in Wood Panel Products | FPI20411 Certificate II in Wood Panel Products | Three new units added to Group B elective pool: <ul style="list-style-type: none"> FPICOT2241 Apply wood and timber product knowledge FPICOT3263 Maintain and contribute to energy efficiency FPICOT3264 Build and maintain timber stacks Updated non-equivalent imported unit in Group B elective pool: <ul style="list-style-type: none"> HLTFA311A Apply first aid Imported unit updated to current release: <ul style="list-style-type: none"> MEM18011C | E |
| FPI20511 Certificate II in Timber | FPI20511 Certificate II in Timber | New unit added to Group A elective pool: | E |

| Mapping of qualifications to the previous Training Package | | | |
|--|--|---|------------|
| FPI11 V2.1 | Relationship to FPI11 V1.1 | Comment in relation to the previous iteration of the Training Package | E/N |
| Manufactured Products | Manufactured Products | <ul style="list-style-type: none"> FPICOT2241 Apply wood and timber product knowledge New units added to Group B elective pool: <ul style="list-style-type: none"> FPICOT3263 Maintain and contribute to energy efficiency FPICOT3264 Build and maintain timber stacks Updated non-equivalent imported unit in Group B elective pool: <ul style="list-style-type: none"> HLTFA311A Apply first aid | |
| FPI20611 Certificate II in Timber Merchandising | FPI20611 Certificate II in Timber Merchandising | New units added to Group A elective pool: <ul style="list-style-type: none"> FPICOT2241 Apply wood and timber product knowledge FPICOT3264 Build and maintain timber stacks New unit added to Group B elective pool: <ul style="list-style-type: none"> FPICOT3263 Maintain and contribute to energy efficiency Updated non-equivalent imported unit in Group B elective pool: <ul style="list-style-type: none"> HLTFA311A Apply first aid Imported units updated to current release: <ul style="list-style-type: none"> SIRXADM001A SIRXFIN002A SIRXICT001A SIRXINV001A | E |
| FPI20711 Certificate II in Timber Truss and Frame Design and Manufacture | FPI20711 Certificate II in Timber Truss and Frame Design and Manufacture | New units added to Group A elective pool: <ul style="list-style-type: none"> FPICOT3263 Maintain and contribute to energy efficiency FPICOT3264 Build and maintain timber stacks Updated non-equivalent imported unit in Group A elective pool: <ul style="list-style-type: none"> HLTFA311A Apply first aid | E |

| Mapping of qualifications to the previous Training Package | | | |
|---|---|--|------------|
| FPI11 V2.1 | Relationship to FPI11 V1.1 | Comment in relation to the previous iteration of the Training Package | E/N |
| FPI30113 Certificate III in Forest Growing and Management | FPI30111 Certificate III in Forest Growing and Management | <p>Core non-equivalent imported unit updated to current:</p> <ul style="list-style-type: none"> HLTFA311A Apply first aid <p>New unit added to Group B elective pool:</p> <ul style="list-style-type: none"> FPICOT3263 Maintain and contribute to energy efficiency <p>Updated non-equivalent imported unit in Group B elective pool:</p> <ul style="list-style-type: none"> HLTFA412A Apply advanced first aid (unit has HLTFA311A Apply first aid as a prerequisite) <p>Imported units updated to current release:</p> <ul style="list-style-type: none"> PUAFIR303B PUAFIR309B PUALAW002B PUAOHS002B PUATEA002B | N |
| FPI30213 Certificate III in Harvesting and Haulage | FPI30211 Certificate III in Harvesting and Haulage | <p>Core non-equivalent imported unit updated to current:</p> <ul style="list-style-type: none"> HLTFA311A Apply first aid <p>Three new units added to the elective pool:</p> <ul style="list-style-type: none"> FPICOT3261 Transport forestry logs using trucks (replacing non-equivalent superseded elective FPICOT3226B Shift forestry logs using trucks) FPICOT3262 Transport forestry produce using trucks FPICOT3263 Maintain and contribute to energy efficiency <p>Elective units updated to current equivalent version:</p> <ul style="list-style-type: none"> TLILIC2016B Licence to drive a heavy rigid vehicle TLILIC3017B Licence to drive a heavy combination vehicle | N |

| Mapping of qualifications to the previous Training Package | | | |
|---|---|---|------------|
| FPI11 V2.1 | Relationship to FPI11 V1.1 | Comment in relation to the previous iteration of the Training Package | E/N |
| | | <ul style="list-style-type: none"> • TLILIC3018B Licence to drive a multi combination vehicle <p>Updated non-equivalent imported unit in Group B elective pool:</p> <ul style="list-style-type: none"> • HLTF412A Apply advanced first aid (unit has HLTF311A Apply first aid as a prerequisite) <p>Imported units updated to current release:</p> <ul style="list-style-type: none"> • PUAFIR303B • PUAFIR309B • PUAOHS002B • PUATEA002B | |
| FPI30311 Certificate III in Sawmilling and Processing | FPI30311 Certificate III in Sawmilling and Processing | <p>New units added to Group A elective pool:</p> <ul style="list-style-type: none"> • FPICOT2241 Apply wood and timber product knowledge • FPICOT3264 Build and maintain timber stacks <p>New unit added to Group B elective pool:</p> <ul style="list-style-type: none"> • FPICOT3263 Maintain and contribute to energy efficiency <p>Updated non-equivalent imported units in Group B elective pool:</p> <ul style="list-style-type: none"> • MSS404060A Facilitate the use of planning software systems in a work area or team (prerequisite required of previous version removed) • HLTF412A Apply advanced first aid (unit has HLTF311A Apply first aid as a prerequisite) <p>Imported unit updated to current release:</p> <ul style="list-style-type: none"> • MEM18011C | E |
| FPI30411 Certificate III in Wood Panel Products | FPI30411 Certificate III in Wood Panel Products | <p>New units added to Group A elective pool:</p> <ul style="list-style-type: none"> • FPICOT2241 Apply wood and timber | E |

| Mapping of qualifications to the previous Training Package | | | |
|---|--|---|------------|
| FPI11 V2.1 | Relationship to FPI11 V1.1 | Comment in relation to the previous iteration of the Training Package | E/N |
| | | <p>product knowledge</p> <ul style="list-style-type: none"> • FPICOT3264 Build and maintain timber stacks <p>New unit added to Group B elective pool:</p> <ul style="list-style-type: none"> • FPICOT3263 Maintain and contribute to energy efficiency <p>Updated non-equivalent imported units in Group B elective pool:</p> <ul style="list-style-type: none"> • HLTF311A Apply first aid • HLTF412A Apply advanced first aid (unit has HLTF311A Apply first aid as a prerequisite) • MSS402060A Use planning software systems in operations • MSS404060A Facilitate the use of planning software systems in a work area or team (prerequisite required of previous version removed) <p>Imported unit updated to current release:</p> <ul style="list-style-type: none"> • MEM18011C | |
| FPI30511 Certificate III in Timber Manufactured Products | FPI30511 Certificate III in Timber Manufactured Products | <p>New units added to Group B elective pool:</p> <ul style="list-style-type: none"> • FPICOT2241 Apply wood and timber product knowledge • FPICOT3263 Maintain and contribute to energy efficiency • FPICOT3264 Build and maintain timber stacks <p>Updated non-equivalent imported units in Group B elective pool:</p> <ul style="list-style-type: none"> • HLTF311A Apply first aid • HLTF412A Apply advanced first aid (unit has HLTF311A Apply first aid as a prerequisite) • MSS402060A Use planning software systems in operations • MSS404060A Facilitate the use of | E |

| Mapping of qualifications to the previous Training Package | | | |
|---|---|---|------------|
| FPI11 V2.1 | Relationship to FPI11 V1.1 | Comment in relation to the previous iteration of the Training Package | E/N |
| | | planning software systems in a work area or team (prerequisite required of previous version removed) | |
| FPI30611 Certificate III in Timber Merchandising | FPI30611 Certificate III in Timber Merchandising | <p>New units added to Group A elective pool:</p> <ul style="list-style-type: none"> FPICOT2241 Apply wood and timber product knowledge FPICOT3264 Build and maintain timber stacks <p>New unit added to Group B elective pool:</p> <ul style="list-style-type: none"> FPICOT3263 Maintain and contribute to energy efficiency <p>Updated non-equivalent imported unit in Group B elective pool:</p> <ul style="list-style-type: none"> HLTFA412A Apply advanced first aid (unit has HLTFA311A Apply first aid as a prerequisite) <p>Imported unit updated to current release:</p> <ul style="list-style-type: none"> SIRRRPK010A SIRXFIN003A SIRXINV002A SIRXRSK002A SIRXRSK003A | E |
| FPI30711 Certificate III in Sawdoctoring | FPI30711 Certificate III in Sawdoctoring | <p>New unit added to elective pool:</p> <ul style="list-style-type: none"> FPICOT3263 Maintain and contribute to energy efficiency | E |
| FPI30811 Certificate III in Woodmachining | FPI30811 Certificate III in Woodmachining | <p>New unit added to Group B elective pool:</p> <ul style="list-style-type: none"> FPICOT3263 Maintain and contribute to energy efficiency | E |
| FPI30911 Certificate III in Timber Truss and Frame Design and Manufacture | FPI30911 Certificate III in Timber Truss and Frame Design and Manufacture | <p>New units added to Group C elective pool:</p> <ul style="list-style-type: none"> FPICOT3263 Maintain and contribute to energy efficiency FPICOT3264 Build and maintain timber stacks <p>Updated non-equivalent imported units in</p> | E |

| Mapping of qualifications to the previous Training Package | | | |
|---|--|--|------------|
| FPI11 V2.1 | Relationship to FPI11 V1.1 | Comment in relation to the previous iteration of the Training Package | E/N |
| | | Group C elective pool: <ul style="list-style-type: none"> • CPCCCM1015A Carry out measurements and calculations • HLTF311A Apply first aid • HLTF412A Apply advanced first aid (unit has HLTF311A Apply first aid as a prerequisite) | |
| FPI40111 Certificate IV in Forest Operations | FPI40111 Certificate IV in Forest Operations | Native unit updated to current equivalent version: <ul style="list-style-type: none"> • FPIFGM4203C Design plantations Two imported units added to Group B elective pool: <ul style="list-style-type: none"> • MSS015011A Conduct a sustainability energy audit • MSS405070A Develop and manage sustainable energy practices Updated non-equivalent imported units in Group B elective pool: <ul style="list-style-type: none"> • BSBPMG416A Apply project procurement procedures • HLTF311A Apply first aid • HLTF412A Apply advanced first aid (unit has HLTF311A Apply first aid as a prerequisite) Updated equivalent imported units in Group B elective pool: <ul style="list-style-type: none"> • PUALAW002B • SITTPPD402 Develop interpretive activities | E |
| FPI40211 Certificate IV in Timber Processing | FPI40211 Certificate IV in Timber Processing | Two imported units added to Group B elective pool: <ul style="list-style-type: none"> • MSS015011A Conduct a sustainability energy audit • MSS405070A Develop and manage sustainable energy practices Updated non-equivalent imported unit in | E |

| Mapping of qualifications to the previous Training Package | | | |
|---|---|---|------------|
| FPI11 V2.1 | Relationship to FPI11 V1.1 | Comment in relation to the previous iteration of the Training Package | E/N |
| | | Group B elective pool: <ul style="list-style-type: none"> • BSBPMG416A Apply project procurement procedures Co-requisite unit to HLTF403C updated to current non-equivalent version HLTF412A | |
| FPI40311 Certificate IV in Timber Truss and Frame Manufacture | FPI40311 Certificate IV in Timber Truss and Frame Manufacture | Two imported units added to elective pool: <ul style="list-style-type: none"> • MSS015011A Conduct a sustainability energy audit • MSS405070A Develop and manage sustainable energy practices Updated non-equivalent imported units in elective pool: <ul style="list-style-type: none"> • BSBPMG415A Apply project risk-management techniques • HLTF412A Apply advanced first aid (unit has HLTF311A Apply first aid as a prerequisite) • MSS404060A Facilitate the use of planning software systems in a work area or team Updated equivalent imported units in elective pool: <ul style="list-style-type: none"> • BSBPMG522A Undertake project work • CPCCA3006B Erect roof trusses • MSS404050A Undertake process capability improvements (*Prerequisite MSS404052A Apply statistics to operational processes) | E |
| FPI40411 Certificate IV in Timber Truss and Frame Design | FPI40411 Certificate IV in Timber Truss and Frame Design | Two imported units added to Group B elective pool: <ul style="list-style-type: none"> • MSS015011A Conduct a sustainability energy audit • MSS405070A Develop and manage sustainable energy practices | E |

| Mapping of qualifications to the previous Training Package | | | |
|---|--|---|------------|
| FPI11 V2.1 | Relationship to FPI11 V1.1 | Comment in relation to the previous iteration of the Training Package | E/N |
| | | <p>Updated non-equivalent imported units in Group C elective pool:</p> <ul style="list-style-type: none"> • BSBPMG415A Apply project risk-management techniques • HLTFA412A Apply advanced first aid (unit has HLTFA311A Apply first aid as a prerequisite) • MSS404060A Facilitate the use of planning software systems in a work area or team <p>Updated equivalent imported units in Group C elective pool:</p> <ul style="list-style-type: none"> • BSBPMG522A Undertake project work • CPCCCA3006B Erect roof trusses • MSS404050A Undertake process capability improvements (*Prerequisite <i>MSS404052A Apply statistics to operational processes</i>) | |
| FPI50111 Diploma of Forest and Forest Products | FPI50111 Diploma of Forest and Forest Products | <p>Core imported unit updated with equivalent version:</p> <ul style="list-style-type: none"> • BSBOHS504B Apply principles of OHS risk management replaced with BSBWHS503A Contribute to the systematic management of WHS risk <p>Two imported units added to Group B elective pool:</p> <ul style="list-style-type: none"> • MSS015011A Conduct a sustainability energy audit • MSS405070A Develop and manage sustainable energy practices <p>Native and imported elective units updated to current equivalent version:</p> <ul style="list-style-type: none"> • BSBPMG522A replaces BSBPMG510A • FPICOT5206B replaces FPICOT5206A | E |

| Mapping of qualifications to the previous Training Package | | | |
|---|--|--|------------|
| FPI11 V2.1 | Relationship to FPI11 V1.1 | Comment in relation to the previous iteration of the Training Package | E/N |
| | | <ul style="list-style-type: none"> • FPICOT5208B replaces FPICOT5208A • FPICOT5209B replaces FPICOT5209A • FPIFGM5219 replaces FPIFGM5218A Imported units updated to current release: <ul style="list-style-type: none"> • LGACOM401A • LGACOM409A • LGACOM502B • LGAEHRR504C • LGAPLEM404A • LGAPLEM612B • PUAFIR501B • PUAFIR509B • PUALAW001B • PUAOPE007B | |
| FPI50311 Diploma of Timber Truss and Frame Manufacture | FPI50311 Diploma of Timber Truss and Frame Manufacture | Core imported unit updated with equivalent version: <ul style="list-style-type: none"> • BSBOHS504B Apply principles of OHS risk management replaced with BSBWHS503A Contribute to the systematic management of WHS risk Two imported units added to Group B elective pool: <ul style="list-style-type: none"> • MSS015011A Conduct a sustainability energy audit • MSS405070A Develop and manage sustainable energy practices One imported unit of competency updated: <ul style="list-style-type: none"> • MSS405075A replaces MSACMT675A - Equivalent | E |
| FPI50411 Diploma of Timber Truss and Frame Design | FPI50411 Diploma of Timber Truss and Frame Design | Core imported unit updated with equivalent version: <ul style="list-style-type: none"> • BSBOHS504B Apply principles of OHS risk management replaced with BSBWHS503A Contribute to the | E |

| Mapping of qualifications to the previous Training Package | | | |
|---|---|--|------------|
| FPI11 V2.1 | Relationship to FPI11 V1.1 | Comment in relation to the previous iteration of the Training Package | E/N |
| | | <p>systematic management of WHS risk</p> <p>Two imported units added to Group B elective pool:</p> <ul style="list-style-type: none"> • MSS015011A Conduct a sustainability energy audit • MSS405070A Develop and manage sustainable energy practices <p>One imported unit of competency updated:</p> <ul style="list-style-type: none"> • MSS405075A replaces MSACMT675A - Equivalent | |
| FPI60113 Advanced Diploma of Forest Industry Sustainability | FPI60111 Advanced Diploma of Forest Industry Sustainability | <p>The total number of units required has been reduced from 14 to 10, as a result of:</p> <ul style="list-style-type: none"> • core units required reduced from 3 to 2 • elective units required reduced from 11 to 8 and packaging of electives changed to increase qualification's flexibility and provide option to focus on leadership through the choice of elective units <p>Further changes to qualification as follows:</p> <ul style="list-style-type: none"> • naming of elective unit fields and allocation of units to fields in qualification changed • updates to native and imported elective units of competency, while maintaining equivalence: • FPICOT5206B • FPICOT5208B • FPICOT5209B • FPICOT6202B • FPIFGM5219 replaces FPIFGM5218A • FPIFGM6203 replaces FPIFGM6202A • FPIFGM6201B • addition of imported elective units into leadership field of elective pool: • BSBMGT616A Develop and | N |

| Mapping of qualifications to the previous Training Package | | | |
|---|-----------------------------------|--|------------|
| FPI11 V2.1 | Relationship to FPI11 V1.1 | Comment in relation to the previous iteration of the Training Package | E/N |
| | | <p>implement strategic plans</p> <ul style="list-style-type: none"> • BSBPMG414A Apply project information management and communications techniques • imported units removed from qualification: • PSPGOV521A and BSBPMG510A replaced by BSBPMG414A • PSPGOV602B replaced by BSBREL701A • PSPMNGT604B and PSPMNGT703A replaced by BSBMGT608C and BSBINN601B • units removed from qualification: • BSBADM502B • BSBWOR501B • SIRXFIN005A • SIRXMER004A • SIRXMGT005A <p>Imported units updated to current release:</p> <ul style="list-style-type: none"> • PSPPOL603A • PSPREG603A • SIRXFIN004A | |

Mapping of Units of Competency to the Previous Training Pack

| Unit code and title FPI11 V 2.1 | Unit code and title FPI11 V1.1 | Relationship |
|---|---|--------------|
| Core | Core | |
| FPICOR2201B Work effectively in the forest and forest products industry | FPICOR2201B Work effectively in the forest and forest products industry | Equivalent |
| FPICOR2202B Communicate and interact effectively in the workplace | FPICOR2202B Communicate and interact effectively in the workplace | Equivalent |
| FPICOR2203B Follow environmental care procedures | FPICOR2203B Follow environmental care procedures | Equivalent |
| FPICOR2204B Follow fire prevention procedures | FPICOR2204B Follow fire prevention procedures | Equivalent |
| FPICOR2205B Follow OHS policies and procedures | FPICOR2205B Follow OHS policies and procedures | Equivalent |
| FPICOR2207B Maintain quality and product care | FPICOR2207B Maintain quality and product care | Equivalent |
| FPICOR3201B Implement SHE policies and procedures | FPICOR3201B Implement SHE policies and procedures | Equivalent |
| FPICOR3202B Conduct quality and product care procedures | FPICOR3202B Conduct quality and product care procedures | Equivalent |
| FPICOR3203B Evaluate fire potential and prevention | FPICOR3203B Evaluate fire potential and prevention | Equivalent |
| FPICOR3204B Visually assess materials | FPICOR3204B Visually assess materials | Equivalent |
| FPICOR4201B Monitor SHE policies and procedures | FPICOR4201B Monitor SHE policies and procedures | Equivalent |
| FPICOR4202B Monitor and review forestry operations | FPICOR4202B Monitor and review forestry operations | Equivalent |
| FPICOR4203B Monitor quality and product care procedures | FPICOR4203B Monitor quality and product care procedures | Equivalent |

| Unit code and title FPI11 V 2.1 | Unit code and title FPI11 V1.1 | Relationship |
|--|--|---------------------|
| FPICOR6201A Manage sustainability in the workplace | FPICOR6201A Manage sustainability in the workplace | Equivalent |
| FPICOR6202A Implement practices to maximise value from wood residues | FPICOR6202A Implement practices to maximise value from wood residues | Equivalent |
| Common Technical | Common Technical | |
| FPICOT2201B Stack and bind material | FPICOT2201B Stack and bind material | Equivalent |
| FPICOT2202B Rack material | FPICOT2202B Rack material | Equivalent |
| FPICOT2203B Finish products | FPICOT2203B Finish products | Equivalent |
| FPICOT2205B Tail out materials | FPICOT2205B Tail out materials | Equivalent |
| FPICOT2207B Dress boards and timber | FPICOT2207B Dress boards and timber | Equivalent |
| FPICOT2208B Resaw boards and timber | FPICOT2208B Resaw boards and timber | Equivalent |
| FPICOT2209B Produce finger jointed timber | FPICOT2209B Produce finger jointed timber | Equivalent |
| FPICOT2210B Tally material | FPICOT2210B Tally material | Equivalent |
| FPICOT2211B Produce pointed timber products | FPICOT2211B Produce pointed timber products | Equivalent |
| FPICOT2212B Grade hardwood sawn and milled products | FPICOT2212B Grade hardwood sawn and milled products | Equivalent |
| FPICOT2213B Grade softwood sawn and milled products | FPICOT2213B Grade softwood sawn and milled products | Equivalent |
| FPICOT2214B Grade cypress sawn and milled products | FPICOT2214B Grade cypress sawn and milled products | Equivalent |
| FPICOT2215B Visually stress | FPICOT2215B Visually stress | Equivalent |

| Unit code and title FPI11 V 2.1 | Unit code and title FPI11 V1.1 | Relationship |
|--|--|---------------------|
| grade hardwood | grade hardwood | |
| FPICOT2216B Visually stress grade softwood | FPICOT2216B Visually stress grade softwood | Equivalent |
| FPICOT2217B Visually stress grade cypress | FPICOT2217B Visually stress grade cypress | Equivalent |
| FPICOT2218B Cross cut materials with a fixed saw | FPICOT2218B Cross cut materials with a fixed saw | Equivalent |
| FPICOT2219B Use hand-held tools | FPICOT2219B Use hand-held tools | Equivalent |
| FPICOT2220B Select trees for tending operations | FPICOT2220B Select trees for tending operations | Equivalent |
| FPICOT2222B Produce laminated beams | FPICOT2222B Produce laminated beams | Equivalent |
| FPICOT2223B Segregate and sort logs | FPICOT2223B Segregate and sort logs | Equivalent |
| FPICOT2224B Band edges of panels | FPICOT2224B Band edges of panels | Equivalent |
| FPICOT2225B Chip or flake wood | FPICOT2225B Chip or flake wood | Equivalent |
| FPICOT2226B Debark logs mechanically | FPICOT2226B Debark logs mechanically | Equivalent |
| FPICOT2227B Process orders and despatch products | FPICOT2227B Process orders and despatch products | Equivalent |
| FPICOT2228B Store materials | FPICOT2228B Store materials | Equivalent |
| FPICOT2229B Dock material to length | FPICOT2229B Dock material to length | Equivalent |
| FPICOT2230B Assemble products | FPICOT2230B Assemble products | Equivalent |
| FPICOT2231B Pack products | FPICOT2231B Pack products | Equivalent |
| FPICOT2232B Cut material to | FPICOT2232B Cut material to | Equivalent |

| Unit code and title FPI11 V 2.1 | Unit code and title FPI11 V1.1 | Relationship |
|--|--|------------------------------|
| shape using a saw | shape using a saw | |
| FPICOT2233B Navigate in forest areas | FPICOT2233B Navigate in forest areas | Equivalent |
| FPICOT2235A Assess timber for manufacturing potential | FPICOT2235A Assess timber for manufacturing potential | Equivalent |
| FPICOT2236 Fall trees manually (basic) | FPICOT2236 Fall trees manually (basic) | Equivalent |
| FPICOT2237A Maintain chainsaws | FPICOT2237A Maintain chainsaws | Equivalent |
| FPICOT2238A Cut materials with a hand-held chain saw | FPICOT2238A Cut materials with a hand-held chain saw | Equivalent |
| FPICOT2239A Trim and cut felled trees | FPICOT2239A Trim and cut felled trees | Equivalent |
| FPICOT2240 Cut material with a pole saw | FPICOT2240 Cut material with a pole saw | Equivalent |
| FPICOT2241 Apply wood and timber product knowledge | No previous unit | New unit, no equivalent unit |
| FPICOT3201B Hand sharpen knives and blades | FPICOT3201B Hand sharpen knives and blades | Equivalent |
| FPICOT3202B Navigate in remote or trackless areas | FPICOT3202B Navigate in remote or trackless areas | Equivalent |
| FPICOT3203B Weigh loads | FPICOT3203B Weigh loads | Equivalent |
| FPICOT3204B Prepare and interpret sketches and drawings | FPICOT3204B Prepare and interpret sketches and drawings | Equivalent |
| FPICOT3205B Dress boards using multi-headed machines | FPICOT3205B Dress boards using multi-headed machines | Equivalent |
| FPICOT3206B Cut material using high speed optimiser | FPICOT3206B Cut material using high speed optimiser | Equivalent |
| FPICOT3207B Set up, operate and maintain finger jointing | FPICOT3207B Set up, operate and maintain finger jointing | Equivalent |

| Unit code and title FPI11 V 2.1 | Unit code and title FPI11 V1.1 | Relationship |
|---|---|---------------------|
| operations | operations | |
| FPICOT3208B Test strength of joints | FPICOT3208B Test strength of joints | Equivalent |
| FPICOT3209B Set up, operate and maintain end matching operations | FPICOT3209B Set up, operate and maintain end matching operations | Equivalent |
| FPICOT3210B Sharpen cutting tools | FPICOT3210B Sharpen cutting tools | Equivalent |
| FPICOT3211B Maintain sawdoctoring tools | FPICOT3211B Maintain sawdoctoring tools | Equivalent |
| FPICOT3212B Replace saws, blades and guides | FPICOT3212B Replace saws, blades and guides | Equivalent |
| FPICOT3213B Manufacture cutting tools | FPICOT3213B Manufacture cutting tools | Equivalent |
| FPICOT3214B Take off material quantities | FPICOT3214B Take off material quantities | Equivalent |
| FPICOT3215B Swage and shape saw blades | FPICOT3215B Swage and shape saw blades | Equivalent |
| FPICOT3216B Assess and maintain saw performance | FPICOT3216B Assess and maintain saw performance | Equivalent |
| FPICOT3217B Assess and maintain cutter performance | FPICOT3217B Assess and maintain cutter performance | Equivalent |
| FPICOT3218B Quote and interpret from manufactured timber product plans | FPICOT3218B Quote and interpret from manufactured timber product plans | Equivalent |
| FPICOT3219B Produce standard truss or frame plans and details using computers | FPICOT3219B Produce standard truss or frame plans and details using computers | Equivalent |
| FPICOT3220B Quote and interpret from computerised timber manufactured product plans | FPICOT3220B Quote and interpret from computerised timber manufactured product plans | Equivalent |

| Unit code and title FPI11 V 2.1 | Unit code and title FPI11 V1.1 | Relationship |
|---|---|---|
| FPICOT3221B Rehabilitate tracks, quarries and landings | FPICOT3221B Rehabilitate tracks, quarries and landings | Equivalent |
| FPICOT3222B Present forestry information and interpretations programs | FPICOT3222B Present forestry information and interpretations programs | Equivalent |
| FPICOT3223B Grade and mark logs | FPICOT3223B Grade and mark logs | Equivalent |
| FPICOT3224B Plan and monitor equipment maintenance | FPICOT3224B Plan and monitor equipment maintenance | Equivalent |
| FPICOT3225B Mechanically stress grade timber | FPICOT3225B Mechanically stress grade timber | Equivalent |
| | FPICOT3226B Shift forestry logs using trucks | Deleted and replaced by FPICOT3261, No Equivalent |

| Unit code and title FPI11 V 2.1 | Unit code and title FPI11 V1.1 | Relationship |
|---|---|---------------------|
| FPICOT3227B Receive and measure logs | FPICOT3227B Receive and measure logs | Equivalent |
| FPICOT3228B Plane/sand panels | FPICOT3228B Plane/sand panels | Equivalent |
| FPICOT3229B Mechanically stress grade panels | FPICOT3229B Mechanically stress grade panels | Equivalent |
| FPICOT3230B Operate automated stacking equipment | FPICOT3230B Operate automated stacking equipment | Equivalent |
| FPICOT3231B Operate steam boiler | FPICOT3231B Operate steam boiler | Equivalent |
| FPICOT3232B Operate heat plant | FPICOT3232B Operate heat plant | Equivalent |
| FPICOT3233B Sharpen and align blades and knives | FPICOT3233B Sharpen and align blades and knives | Equivalent |
| FPICOT3234B Cut material using CNC sizing machines | FPICOT3234B Cut material using CNC sizing machines | Equivalent |
| FPICOT3235B Machine material using CNC machining and processing centres | FPICOT3235B Machine material using CNC machining and processing centres | Equivalent |
| FPICOT3236B Coordinate stock control procedures | FPICOT3236B Coordinate stock control procedures | Equivalent |
| FPICOT3237B Produce templates | FPICOT3237B Produce templates | Equivalent |
| FPICOT3238B Operate a pole saw | FPICOT3238B Operate a pole saw | Equivalent |
| FPICOT3239B Create drawings using computer aided design systems | FPICOT3239B Create drawings using computer aided design systems | Equivalent |
| FPICOT3240B Grade heavy structural/engineered products | FPICOT3240B Grade heavy structural/engineered products | Equivalent |
| FPICOT3241B Assemble | FPICOT3241B Assemble | Equivalent |

| Unit code and title FPI11 V 2.1 | Unit code and title FPI11 V1.1 | Relationship |
|--|--|---------------------|
| timber wall frames | timber wall frames | |
| FPICOT3242B Lay up timber roof trusses | FPICOT3242B Lay up timber roof trusses | Equivalent |
| FPICOT3243B Operate a truss press | FPICOT3243B Operate a truss press | Equivalent |
| FPICOT3244B Cut material to profile | FPICOT3244B Cut material to profile | Equivalent |
| FPICOT3245B Grade, sort and mark material | FPICOT3245B Grade, sort and mark material | Equivalent |
| FPICOT3246B Test heavy structural/engineered products | FPICOT3246B Test heavy structural/engineered products | Equivalent |
| FPICOT3247B Select timber for forestry operations | FPICOT3247B Select timber for forestry operations | Equivalent |
| FPICOT3248A Dry timber in solar assisted kilns | FPICOT3248A Dry timber in solar assisted kilns | Equivalent |
| FPICOT3249A Select timber preservation techniques | FPICOT3249A Select timber preservation techniques | Equivalent |
| FPICOT3250A Prepare timber to meet import/export compliance requirements | FPICOT3250A Prepare timber to meet import/export compliance requirements | Equivalent |
| FPICOT3251A Promote the carbon benefits of wood products | FPICOT3251A Promote the carbon benefits of wood products | Equivalent |
| FPICOT3252A Use environmental care procedures to undertake fire salvage operations | FPICOT3252A Use environmental care procedures to undertake fire salvage operations | Equivalent |
| FPICOT3253A Convert timber residue into products for further use | FPICOT3253A Convert timber residue into products for further use | Equivalent |
| FPICOT3254A Implement environmentally sustainable work practices in the work | FPICOT3254A Implement environmentally sustainable work practices in the work | Equivalent |

| Unit code and title FPI11 V 2.1 | Unit code and title FPI11 V1.1 | Relationship |
|---|---|--|
| area/work site | area/work site | |
| FPICOT3255 Apply silvicultural principles | FPICOT3255 Apply silvicultural principles | Equivalent |
| FPICOT3256 Apply biodiversity protection principles | FPICOT3256 Apply biodiversity protection principles | Equivalent |
| FPICOT3257 Follow cultural heritage requirements | FPICOT3257 Follow cultural heritage requirements | Equivalent |
| FPICOT3258 Comply with soil and water protection | FPICOT3258 Comply with soil and water protection | Equivalent |
| FPICOT3259 Operate a four-wheel drive on unsealed roads | FPICOT3259 Operate a four-wheel drive on unsealed roads | Equivalent |
| FPICOT3260 Recover four-wheel drive vehicles | FPICOT3260 Recover four-wheel drive vehicles | Equivalent |
| FPICOT3261 Transport forestry logs using trucks | FPICOT3226B Shift forestry logs using trucks | New unit, replaces FPICOT3226B. Not Equivalent |
| FPICOT3262 Transport forestry produce using trucks | No previous unit | New unit, no equivalent unit |
| FPICOT3263 Maintain and contribute to energy efficiency | No previous unit | New unit, no equivalent unit |
| FPICOT3264 Build and maintain timber stacks | No previous unit | New unit, no equivalent unit |
| FPICOT4201B Produce complex truss and frame plans and details using computers | FPICOT4201B Produce complex truss and frame plans and details using computers | Equivalent |
| FPICOT4202B Design timber structures | FPICOT4202B Design timber structures | Equivalent |
| FPICOT4203B Plan and coordinate product assembly | FPICOT4203B Plan and coordinate product assembly | Equivalent |
| FPICOT4204B Schedule and | FPICOT4204B Schedule and | Equivalent |

| Unit code and title FPI11 V 2.1 | Unit code and title FPI11 V1.1 | Relationship |
|--|--|--|
| coordinate load shifting | coordinate load shifting | |
| FPICOT4205B Coordinate log debarking operations | FPICOT4205B Coordinate log debarking operations | Equivalent |
| FPICOT4206B Plan and coordinate boiler operations | FPICOT4206B Plan and coordinate boiler operations | Equivalent |
| FPICOT4207B Plan and coordinate heat plant operations | FPICOT4207B Plan and coordinate heat plant operations | Equivalent |
| FPICOT5201B Implement sustainable forestry practices | FPICOT5201B Implement sustainable forestry practices | Equivalent |
| FPICOT5202B Manage forestry information and interpretations programs | FPICOT5202B Manage forestry information and interpretations programs | Equivalent |
| FPICOT5203B Manage installation and commissioning of equipment | FPICOT5203B Manage installation and commissioning of equipment | Equivalent |
| FPICOT5204B Organise enterprise maintenance programs | FPICOT5204B Organise enterprise maintenance programs | Equivalent |
| FPICOT5205A Develop biohazard contingency plans | FPICOT5205A Develop biohazard contingency plans | Equivalent |
| FPICOT5206B Implement forestry chain of custody certification system | FPICOT5206A Implement Forestry Chain of Custody certification system | Explicit reference to Illegal Logging Prohibition Act 2012 included in required knowledge item relating to legislation Application section modified to include reference to native and plantation forest environments Equivalent |
| FPICOT5207A Implement sustainability in the workplace | FPICOT5207A Implement sustainability in the workplace | Equivalent |
| FPICOT5208B Build and | FPICOT5208A Build and | Application section modified |

| Unit code and title FPI11 V 2.1 | Unit code and title FPI11 V1.1 | Relationship |
|--|--|--|
| maintain community relationships | maintain community relationships | to include reference to native and plantation forest environments Equivalent |
| FPICOT5209B Manage tree harvesting to minimise environmental impact | FPICOT5209A Manage tree harvesting to minimise environmental impact | Application section modified to include reference to native and plantation forest environments Equivalent |
| FPICOT6201B Manage community engagement | FPICOT6201A Manage community engagement | Application section modified to include reference to native and plantation forest environments Equivalent |
| FPICOT6202B Develop and manage a forestry chain of custody certification process for the workplace | FPICOT6202A Develop and manage a Forestry Chain of Custody certification process for the workplace | Explicit reference to Illegal Logging Prohibition Act 2012 included in required knowledge item relating to legislation Equivalent |
| FPICOT6203A Develop engineered timber products to meet energy efficient building | FPICOT6203A Develop engineered timber products to meet energy efficient building | Equivalent |
| FPICOT6204A Use carbon accounting to estimate emissions in the workplace | FPICOT6204A Use carbon accounting to estimate emissions in the workplace | Equivalent |
| FPICOT6205A Prepare an enterprise carbon management report | FPICOT6205A Prepare an enterprise carbon management report | Equivalent |
| FPICOT6207A Develop forest management systems and processes | FPICOT6207A Develop forest management systems and processes | Equivalent |
| Forest Growing and Management | Forest Growing and Management | |
| FPIFGM2201B Collect seed | FPIFGM2201B Collect seed | Equivalent |

| Unit code and title FPI11 V 2.1 | Unit code and title FPI11 V1.1 | Relationship |
|---|---|---------------------|
| FPIFGM2202B Prepare seedbed | FPIFGM2202B Prepare seedbed | Equivalent |
| FPIFGM2203B Plant trees by hand | FPIFGM2203B Plant trees by hand | Equivalent |
| FPIFGM2204B Plant trees mechanically | FPIFGM2204B Plant trees mechanically | Equivalent |
| FPIFGM2205B Prune trees | FPIFGM2205B Prune trees | Equivalent |
| FPIFGM2206B Collect data or samples for assessment | FPIFGM2206B Collect data or samples for assessment | Equivalent |
| FPIFGM2207B Undertake brushcutting operations | FPIFGM2207B Undertake brushcutting operations | Equivalent |
| FPIFGM2209B Cut, sort and set cuttings | FPIFGM2209B Cut, sort and set cuttings | Equivalent |
| FPIFGM2210B Implement animal pest control procedures | FPIFGM2210B Implement animal pest control procedures | Equivalent |
| FPIFGM2211B Detect fires | FPIFGM2211B Detect fires | Equivalent |
| FPIFGM2212B Graft cuttings | FPIFGM2212B Graft cuttings | Equivalent |
| FPIFGM2213B Process seed | FPIFGM2213B Process seed | Equivalent |
| FPIFGM2214B Maintain visitor sites | FPIFGM2214B Maintain visitor sites | Equivalent |
| FPIFGM2215B Measure trees | FPIFGM2215B Measure trees | Equivalent |
| FPIFGM3201B Manage seed collection | FPIFGM3201B Manage seed collection | Equivalent |
| FPIFGM3202B Extract seed | FPIFGM3202B Extract seed | Equivalent |
| FPIFGM3203B Conduct an instrument survey | FPIFGM3203B Conduct an instrument survey | Equivalent |
| FPIFGM3206B Plan and implement non-commercial thinning operations | FPIFGM3206B Plan and implement non-commercial thinning operations | Equivalent |

| Unit code and title FPI11 V 2.1 | Unit code and title FPI11 V1.1 | Relationship |
|---|---|--|
| FPIFGM3207B Coordinate stem improvement | FPIFGM3207B Coordinate stem improvement | Equivalent |
| FPIFGM3209B Construct and maintain forest roads and tracks | FPIFGM3209B Construct and maintain forest roads and tracks | Equivalent |
| FPIFGM3210B Patrol forest | FPIFGM3210B Patrol forest | Equivalent |
| FPIFGM3211B Manage coppice stems | FPIFGM3211B Manage coppice stems | Equivalent |
| FPIFGM3212 Fall trees manually (intermediate) | FPIFGM3212 Fall trees manually (intermediate) | Equivalent |
| FPIFGM3213 Fall trees manually (advanced) | FPIFGM3213 Fall trees manually (advanced) | Equivalent |
| FPIFGM3214 Operate a four-wheel drive in a towing situation | FPIFGM3214 Operate a four-wheel drive in a towing situation | Equivalent |
| FPIFGM3215 Perform complex four-wheel drive operations | FPIFGM3215 Perform complex four-wheel drive operations | Equivalent |
| FPIFGM4201B Implement a forest establishment plan | FPIFGM4201B Implement a forest establishment plan | Equivalent |
| FPIFGM4202B Manage stand health | FPIFGM4202B Manage stand health | Equivalent |
| FPIFGM4203C Design plantations | FPIFGM4203B Design plantations | Addition of item in required knowledge section Equivalent |
| FPIFGM4204B Conduct a pests and diseases assessment | FPIFGM4204B Conduct a pests and diseases assessment | Equivalent |
| FPIFGM4205B Monitor regeneration rates | FPIFGM4205B Monitor regeneration rates | Equivalent |
| FPIFGM4206B Conduct a wood volume and yield assessment | FPIFGM4206B Conduct a wood volume and yield assessment | Equivalent |

| Unit code and title FPI11 V 2.1 | Unit code and title FPI11 V1.1 | Relationship |
|--|--|--|
| FPIFGM4207B Conduct a forest site assessment | FPIFGM4207B Conduct a forest site assessment | Equivalent |
| FPIFGM4208B Plan a quarry | FPIFGM4208B Plan a quarry | Equivalent |
| FPIFGM4209B Interpret and use aerial photographs for forest management | FPIFGM4209B Interpret and use aerial photographs for forest management | Equivalent |
| FPIFGM4210B Prepare a tender | FPIFGM4210B Prepare a tender | Equivalent |
| FPIFGM5201B Plan and manage inventory program | FPIFGM5201B Plan and manage inventory program | Equivalent |
| FPIFGM5208B Manage road construction and maintenance | FPIFGM5208B Manage road construction and maintenance | Equivalent |
| FPIFGM5210A Manage tending operations in a native forest | FPIFGM5210A Manage tending operations in a native forest | Equivalent |
| FPIFGM5211A Coordinate stand nutrition | FPIFGM5211A Coordinate stand nutrition | Equivalent |
| FPIFGM5212A Manage genetic resources | FPIFGM5212A Manage genetic resources | Equivalent |
| FPIFGM5213A Coordinate plantation tending operations | FPIFGM5213A Coordinate plantation tending operations | Equivalent |
| FPIFGM5214A Develop a native forest regeneration plan | FPIFGM5214A Develop a native forest regeneration plan | Equivalent |
| FPIFGM5215A Breed trees | FPIFGM5215A Breed trees | Equivalent |
| FPIFGM5216A Manage coupe planning | FPIFGM5216A Manage coupe planning | Equivalent |
| FPIFGM5217A Promote plantations as a sustainable form of land use | FPIFGM5217A Promote plantations as a sustainable form of land use | Equivalent |
| FPIFGM5219 Undertake carbon stock sampling of forests and plantations | FPIFGM5218A Undertake carbon storage sampling of forests and plantations | Title changed generating code change, and further minor changes throughout |

| Unit code and title FPI11 V 2.1 | Unit code and title FPI11 V1.1 | Relationship |
|--|--|---|
| | | Equivalent |
| FPIFGM6201B Plan a biochar storage system for carbon capture and storage | FPIFGM6201A Plan a biochar storage system for carbon capture and storage | Application section modified to clarify reference to native and plantation forest environments Equivalent |
| FPIFGM6203 Manage sustainable tree inventory | FPIFGM6202A Manage tree inventory for sustainable tree management | Title changed generating code change and further minor changes throughout, including change from 'carbon storage' to 'carbon stock' Equivalent |
| Harvest Operators | Harvest Operators | |
| FPIHAR2203B Hook up felled logs using cables (choker) | FPIHAR2203B Hook up felled logs using cables (choker) | Equivalent |
| FPIHAR2204B Perform landing duties (chaser) | FPIHAR2204B Perform landing duties (chaser) | Equivalent |
| FPIHAR2205B Conduct mobile splitting operations | FPIHAR2205B Conduct mobile splitting operations | Equivalent |
| FPIHAR2206B Operate a mobile chipper / mulcher | FPIHAR2206B Operate a mobile chipper / mulcher | Equivalent |
| FPIHAR2207A Trim and cut harvested trees | FPIHAR2207A Trim and cut harvested trees | Equivalent |
| FPIHAR3201B Monitor log recovery (rigging slinger) | FPIHAR3201B Monitor log recovery (rigging slinger) | Equivalent |
| FPIHAR3206C Conduct forwarder operations | FPIHAR3206C Conduct forwarder operations | Equivalent |
| FPIHAR3207C Conduct feller buncher operations | FPIHAR3207C Conduct feller buncher operations | Equivalent |
| FPIHAR3208C Conduct boom delimeter operations | FPIHAR3208C Conduct boom delimeter operations | Equivalent |

| Unit code and title FPI11 V 2.1 | Unit code and title FPI11 V1.1 | Relationship |
|---|---|---------------------|
| FPIHAR3210C Conduct mechanical processor operations | FPIHAR3210C Conduct mechanical processor operations | Equivalent |
| FPIHAR3211B Operate yarder | FPIHAR3211B Operate yarder | Equivalent |
| FPIHAR3213B Conduct mechanically assisted tree falling operations | FPIHAR3213B Conduct mechanically assisted tree falling operations | Equivalent |
| FPIHAR3214C Operate a single grip harvester | FPIHAR3214C Operate a single grip harvester | Equivalent |
| FPIHAR3215C Operate heavy production mobile chipper | FPIHAR3215C Operate heavy production mobile chipper | Equivalent |
| FPIHAR3216A Conduct forestry operations using crawler tractor | FPIHAR3216A Conduct forestry operations using crawler tractor | Equivalent |
| FPIHAR3217A Conduct skidder operations | FPIHAR3217A Conduct skidder operations | Equivalent |
| FPIHAR3218A Conduct loader operations | FPIHAR3218A Conduct loader operations | Equivalent |
| FPIHAR3219A Conduct excavator operations with grabs | FPIHAR3219A Conduct excavator operations with grabs | Equivalent |
| FPIHAR3220 Harvest trees manually (intermediate) | FPIHAR3220 Harvest trees manually (intermediate) | Equivalent |
| FPIHAR3221 Harvest trees manually (advanced) | FPIHAR3221 Harvest trees manually (advanced) | Equivalent |
| FPIHAR4201B Apply tree jacking techniques | FPIHAR4201B Apply tree jacking techniques | Equivalent |
| FPIHAR4202B Coordinate log recovery (hook tender) | FPIHAR4202B Coordinate log recovery (hook tender) | Equivalent |
| FPIHAR4203B Design log landings and snig tracks | FPIHAR4203B Design log landings and snig tracks | Equivalent |

| Unit code and title FPI11 V 2.1 | Unit code and title FPI11 V1.1 | Relationship |
|---|---|---------------------|
| FPIHAR4204B Plan and coordinate fire salvage operations | FPIHAR4204B Plan and coordinate fire salvage operations | Equivalent |
| FPIHAR4205B Implement harvesting plans | FPIHAR4205B Implement harvesting plans | Equivalent |
| FPIHAR5201B Design harvesting plans | FPIHAR5201B Design harvesting plans | Equivalent |
| Sawmilling and Processing | Sawmilling and Processing | |
| FPISAW2201B Grade round poles and debarked logs | FPISAW2201B Grade round poles and debarked logs | Equivalent |
| FPISAW2202B Sort boards manually | FPISAW2202B Sort boards manually | Equivalent |
| FPISAW2203B Sort boards mechanically | FPISAW2203B Sort boards mechanically | Equivalent |
| FPISAW2204B Dock boards with mechanical feed | FPISAW2204B Dock boards with mechanical feed | Equivalent |
| FPISAW2205B Assemble materials using nail plates | FPISAW2205B Assemble materials using nail plates | Equivalent |
| FPISAW2206B De-stack seasoning racks | FPISAW2206B De-stack seasoning racks | Equivalent |
| FPISAW2207B Round softwood logs | FPISAW2207B Round softwood logs | Equivalent |
| FPISAW2208B Split wood products | FPISAW2208B Split wood products | Equivalent |
| FPISAW2209B Dismantle, transport and assemble hand portable sawmill | FPISAW2209B Dismantle, transport and assemble hand portable sawmill | Equivalent |
| FPISAW2210B Prepare for timber treatment operations | FPISAW2210B Prepare for timber treatment operations | Equivalent |
| FPISAW3201B Treat timber | FPISAW3201B Treat timber | Equivalent |
| FPISAW3202B Produce sawn | FPISAW3202B Produce sawn | Equivalent |

| Unit code and title FPI11 V 2.1 | Unit code and title FPI11 V1.1 | Relationship |
|---|---|---------------------|
| green boards | green boards | |
| FPISAW3203B Break down logs | FPISAW3203B Break down logs | Equivalent |
| FPISAW3204B Saw flitches and cants | FPISAW3204B Saw flitches and cants | Equivalent |
| FPISAW3205B Dry hardwood | FPISAW3205B Dry hardwood | Equivalent |
| FPISAW3206B Dry softwood | FPISAW3206B Dry softwood | Equivalent |
| FPISAW3207B Sharpen band saws | FPISAW3207B Sharpen band saws | Equivalent |
| FPISAW3208B Sharpen circular saws | FPISAW3208B Sharpen circular saws | Equivalent |
| FPISAW3209B Align sawing production systems | FPISAW3209B Align sawing production systems | Equivalent |
| FPISAW3210B File and set saws | FPISAW3210B File and set saws | Equivalent |
| FPISAW3211B Recondition guides | FPISAW3211B Recondition guides | Equivalent |
| FPISAW3212B Sharpen tipped circular saws | FPISAW3212B Sharpen tipped circular saws | Equivalent |
| FPISAW3213B Level and tension circular saws | FPISAW3213B Level and tension circular saws | Equivalent |
| FPISAW3214B Join band saw blades | FPISAW3214B Join band saw blades | Equivalent |
| FPISAW3215B Screen wood chips | FPISAW3215B Screen wood chips | Equivalent |
| FPISAW3216B Transfer wood chips | FPISAW3216B Transfer wood chips | Equivalent |
| FPISAW3217B Hard face saw teeth | FPISAW3217B Hard face saw teeth | Equivalent |
| FPISAW3218B Replace | FPISAW3218B Replace | Equivalent |

| Unit code and title FPI11 V 2.1 | Unit code and title FPI11 V1.1 | Relationship |
|---|---|---|
| tungsten tips | tungsten tips | |
| FPISAW3219B Replace stellite tips | FPISAW3219B Replace stellite tips | Equivalent |
| FPISAW3220C Maintain wide band saw blades | FPISAW3220B Maintain wide band saw blades | Data entry error in numbering of performance criteria in elements 1 and 2 corrected Equivalent |
| FPISAW3221B Profile saw blanks | FPISAW3221B Profile saw blanks | Equivalent |
| FPISAW3222B Recondition band mill wheels | FPISAW3222B Recondition band mill wheels | Equivalent |
| FPISAW3223B Assess wood chips | FPISAW3223B Assess wood chips | Equivalent |
| FPISAW3224B Coordinate and monitor the wood chip stockpile | FPISAW3224B Coordinate and monitor the wood chip stockpile | Equivalent |
| FPISAW3225B Maintain frame saw blades | FPISAW3225B Maintain frame saw blades | Equivalent |
| FPISAW3226B Saw logs using CNC optimising systems | FPISAW3226B Saw logs using CNC optimising systems | Equivalent |
| FPISAW3227B Select and saw logs in multi-species operations | FPISAW3227B Select and saw logs in multi-species operations | Equivalent |
| FPISAW3228B Apply principles of blade design to sawing procedures | FPISAW3228B Apply principles of blade design to sawing procedures | Equivalent |
| FPISAW3229B Operate a portable sawmill | FPISAW3229B Operate a portable sawmill | Equivalent |
| FPISAW4201B Plan and monitor timber treatment plant operations | FPISAW4201B Plan and monitor timber treatment plant operations | Equivalent |
| FPISAW4202B Plan and | FPISAW4202B Plan and | Equivalent |

| Unit code and title FPI11 V 2.1 | Unit code and title FPI11 V1.1 | Relationship |
|---|---|---------------------|
| monitor saw log operations | monitor saw log operations | |
| FPISAW4203B Coordinate timber drying operations | FPISAW4203B Coordinate timber drying operations | Equivalent |
| FPISAW4204B Plan and monitor board conversion | FPISAW4204B Plan and monitor board conversion | Equivalent |
| Timber Manufactured Products | Timber Manufactured Products | |
| FPITMM2201B Cut material to length and angles | FPITMM2201B Cut material to length and angles | Equivalent |
| FPITMM2202B Machine material | FPITMM2202B Machine material | Equivalent |
| FPITMM2203A Read and interpret timber truss, floor and/or frame fabrication plans | FPITMM2203A Read and interpret timber truss, floor and/or frame fabrication plans | Equivalent |
| FPITMM3201B Convert timber | FPITMM3201B Convert timber | Equivalent |
| FPITMM3202B Manufacture using joinery machines | FPITMM3202B Manufacture using joinery machines | Equivalent |
| FPITMM3203B Estimate and cost job | FPITMM3203B Estimate and cost job | Equivalent |
| FPITMM3204A Interpret designs to prepare timber roof truss drawings and documents using computers | FPITMM3204A Interpret designs to prepare timber roof truss drawings and documents using computers | Equivalent |
| FPITMM3205A Interpret designs to prepare timber floor system drawings and documents using computers | FPITMM3205A Interpret designs to prepare timber floor system drawings and documents using computers | Equivalent |
| FPITMM3206A Interpret designs to prepare timber wall frame drawings and documents using computers | FPITMM3206A Interpret designs to prepare timber wall frame drawings and documents using computers | Equivalent |
| FPITMM3207A Set up timber | FPITMM3207A Set up timber | Equivalent |

| Unit code and title FPI11 V 2.1 | Unit code and title FPI11 V1.1 | Relationship |
|--|--|---------------------|
| floor trusses | floor trusses | |
| FPITMM4201B Construct prototypes and samples | FPITMM4201B Construct prototypes and samples | Equivalent |
| FPITMM4202B Diagnose and calculate production costs | FPITMM4202B Diagnose and calculate production costs | Equivalent |
| FPITMM4203B Install and commission CNC software | FPITMM4203B Install and commission CNC software | Equivalent |
| FPITMM4204B Sample and test products to specifications | FPITMM4204B Sample and test products to specifications | Equivalent |
| FPITMM4205A Prepare and advise on a broad range of timber roof truss details using computers | FPITMM4205A Prepare and advise on a broad range of timber roof truss details using computers | Equivalent |
| FPITMM4206A Prepare and advise on a broad range of timber floor system details using computers | FPITMM4206A Prepare and advise on a broad range of timber floor system details using computers | Equivalent |
| FPITMM4207A Prepare and advise on a broad range of timber wall frame details using computers | FPITMM4207A Prepare and advise on a broad range of timber wall frame details using computers | Equivalent |
| FPITMM5201B Assess product feasibility of designs | FPITMM5201B Assess product feasibility of designs | Equivalent |
| FPITMM5202B Develop, trial and evaluate prototypes | FPITMM5202B Develop, trial and evaluate prototypes | Equivalent |
| FPITMM5203B Generate and transfer complex computer-aided drawings and specifications | FPITMM5203B Generate and transfer complex computer-aided drawings and specifications | Equivalent |
| FPITMM5204B Manage product design | FPITMM5204B Manage product design | Equivalent |
| FPITMM5205B Optimise CNC operations | FPITMM5205B Optimise CNC operations | Equivalent |

| Unit code and title FPI11 V 2.1 | Unit code and title FPI11 V1.1 | Relationship |
|---|---|---------------------|
| FPITMM5206B Plan production | FPITMM5206B Plan production | Equivalent |
| Wood Panel and Board Production | Wood Panel and Board Production | |
| FPIWPP2201B Cut panels | FPIWPP2201B Cut panels | Equivalent |
| FPIWPP2202B Surface treat raw board | FPIWPP2202B Surface treat raw board | Equivalent |
| FPIWPP2203B Repair veneer and ply | FPIWPP2203B Repair veneer and ply | Equivalent |
| FPIWPP2204B Repair veneer mechanically | FPIWPP2204B Repair veneer mechanically | Equivalent |
| FPIWPP2205B Prepare chip or fibre blends | FPIWPP2205B Prepare chip or fibre blends | Equivalent |
| FPIWPP2206B Prepare veneer for ply | FPIWPP2206B Prepare veneer for ply | Equivalent |
| FPIWPP2207B Scarf edges of veneer | FPIWPP2207B Scarf edges of veneer | Equivalent |
| FPIWPP2208B Cut veneer | FPIWPP2208B Cut veneer | Equivalent |
| FPIWPP2209B Saw products from continuous ply | FPIWPP2209B Saw products from continuous ply | Equivalent |
| FPIWPP2210B Cut panels to profile | FPIWPP2210B Cut panels to profile | Equivalent |
| FPIWPP2211B Move material by transfer equipment | FPIWPP2211B Move material by transfer equipment | Equivalent |
| FPIWPP3201B Produce veneer from debarked logs | FPIWPP3201B Produce veneer from debarked logs | Equivalent |
| FPIWPP3202B Paint panels | FPIWPP3202B Paint panels | Equivalent |
| FPIWPP3203B Produce fibre from chips | FPIWPP3203B Produce fibre from chips | Equivalent |
| FPIWPP3204B Form board | FPIWPP3204B Form board | Equivalent |

| Unit code and title FPI11 V 2.1 | Unit code and title FPI11 V1.1 | Relationship |
|---|---|---------------------|
| FPIWPP3205B Match and join veneer | FPIWPP3205B Match and join veneer | Equivalent |
| FPIWPP3206B Laminate and veneer board surfaces | FPIWPP3206B Laminate and veneer board surfaces | Equivalent |
| FPIWPP3207B Clip veneer | FPIWPP3207B Clip veneer | Equivalent |
| FPIWPP3208B Punch peg holes in panels | FPIWPP3208B Punch peg holes in panels | Equivalent |
| FPIWPP3209B Prepare resin and additives | FPIWPP3209B Prepare resin and additives | Equivalent |
| FPIWPP3210B Laminate board | FPIWPP3210B Laminate board | Equivalent |
| FPIWPP3211B Maintain caul plates and screens | FPIWPP3211B Maintain caul plates and screens | Equivalent |
| FPIWPP3212B Dry material | FPIWPP3212B Dry material | Equivalent |
| FPIWPP3213B Heat treat material | FPIWPP3213B Heat treat material | Equivalent |
| FPIWPP3214B Treat paper | FPIWPP3214B Treat paper | Equivalent |
| FPIWPP3215B Cut paper | FPIWPP3215B Cut paper | Equivalent |
| FPIWPP3216B Press material using the daylight process | FPIWPP3216B Press material using the daylight process | Equivalent |
| FPIWPP3217B Process production effluent | FPIWPP3217B Process production effluent | Equivalent |
| FPIWPP3218B Coordinate machining of panels | FPIWPP3218B Coordinate machining of panels | Equivalent |
| FPIWPP3219B Blend and test binding mixes | FPIWPP3219B Blend and test binding mixes | Equivalent |
| FPIWPP3220B Plan and coordinate panel painting | FPIWPP3220B Plan and coordinate panel painting | Equivalent |
| FPIWPP3221B Trim new panels to size | FPIWPP3221B Trim new panels to size | Equivalent |

| Unit code and title FPI11 V 2.1 | Unit code and title FPI11 V1.1 | Relationship |
|--|--|---------------------|
| FPIWPP3222B Press laminated ply | FPIWPP3222B Press laminated ply | Equivalent |
| FPIWPP3223B Immunise veneer | FPIWPP3223B Immunise veneer | Equivalent |
| FPIWPP3224B Profile sand products | FPIWPP3224B Profile sand products | Equivalent |
| FPIWPP3225B Produce profile sanding shoes and wheels | FPIWPP3225B Produce profile sanding shoes and wheels | Equivalent |
| FPIWPP3226B Operate a continuous press | FPIWPP3226B Operate a continuous press | Equivalent |
| FPIWPP3227B Vacuum paint | FPIWPP3227B Vacuum paint | Equivalent |
| FPIWPP3228A Dry wood flakes | FPIWPP3228A Dry wood flakes | Equivalent |
| FPIWPP3229B Classify flake | FPIWPP3229B Classify flake | Equivalent |
| FPIWPP3230B Produce decorative veneers | FPIWPP3230B Produce decorative veneers | Equivalent |
| FPIWPP3231B Produce veneer from prepared flitches | FPIWPP3231B Produce veneer from prepared flitches | Equivalent |
| FPIWPP4201B Plan and coordinate panel production | FPIWPP4201B Plan and coordinate panel production | Equivalent |
| FPIWPP4202B Perform laboratory testing | FPIWPP4202B Perform laboratory testing | Equivalent |

Overview

What is a training package

A Training Package is an integrated set of nationally endorsed competency standards, assessment guidelines and Australian Qualifications Framework (AQF) qualifications for a specific industry, industry sector or enterprise.

Each Training Package:

- provides a consistent and reliable set of components for training, recognising and assessing peoples' skills, and may also have optional support materials
- enables nationally recognised qualifications to be awarded through direct assessment of workplace competencies
- encourages the development and delivery of flexible training which suits individual and industry requirements
- encourages learning and assessment in a work-related environment which leads to verifiable workplace outcomes.

How do Training Packages fit within the National Skills Framework?

The National Skills Framework applies nationally, is endorsed by the Ministerial Council for Vocational and Technical Education, and comprises the Australian Quality Training Framework 2010 (AQTF 2010), and Training Packages endorsed by the National Standards Skills Council (NSSC).

How are Training Packages developed?

Training Packages are developed by Industry Skills Councils or enterprises to meet the identified training needs of specific industries or industry sectors. To gain national endorsement of Training Packages, developers must provide evidence of extensive research, consultation and support within the industry area or enterprise.

How do Training Packages encourage flexibility?

Training Packages describe the skills and knowledge needed to perform effectively in the workplace without prescribing how people should be trained.

Training Packages acknowledge that people can achieve vocational competency in many ways by emphasising what the learner can do, not how or where they learned to do it. For example, some experienced workers might be able to demonstrate competency against the units of competency, and even gain a qualification, without completing a formal training program.

With Training Packages, assessment and training may be conducted at the workplace, off-the-job, at a training organisation, during regular work, or through work experience, work placement, work simulation or any combination of these.

Who can deliver and assess using Training Packages?

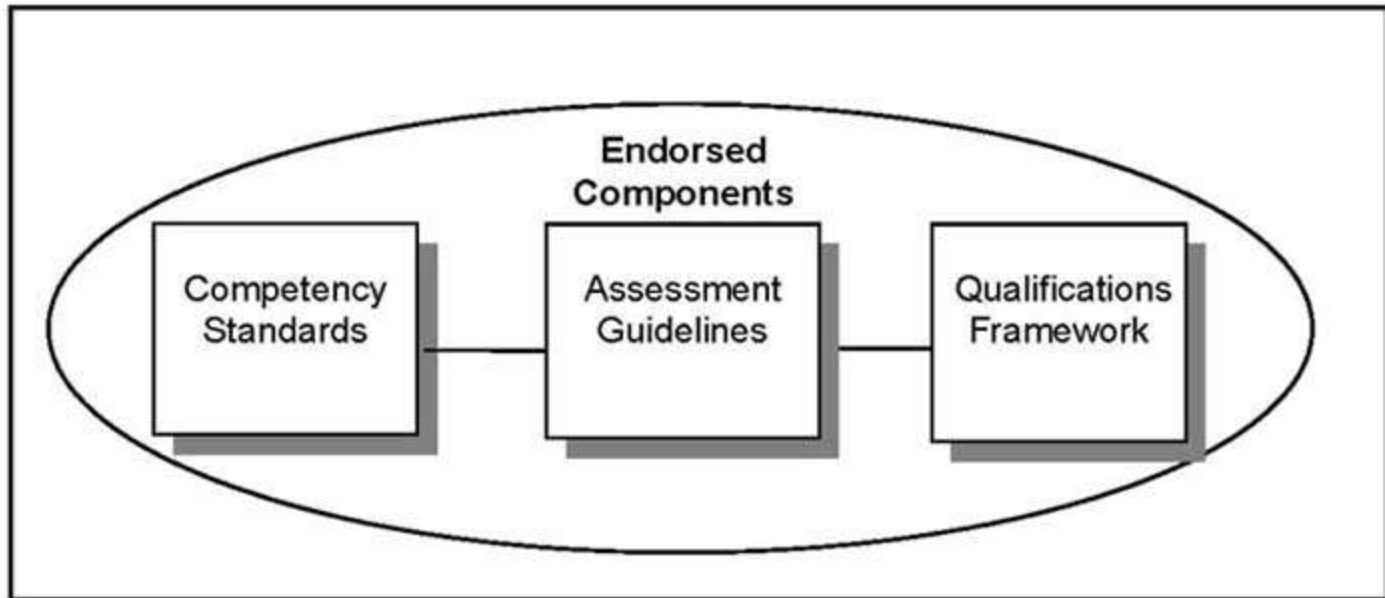
Training and assessment using Training Packages must be conducted by a Registered Training Organisation (RTO) that has the qualifications or specific units of competency on its scope of registration, or that works in partnership with another RTO, as specified in the AQTF 2010.

Training Package Components

Training Packages are made up of mandatory components endorsed by the NQC, and optional support materials.

Training Package Endorsed Components

The nationally endorsed components include the Competency Standards, Assessment Guidelines and Qualifications Framework. These form the basis of training and assessment in the Training Package and, as such, they must be used.



Competency Standards

Each unit of competency identifies a discrete workplace requirement and includes the knowledge and skills that underpin competency as well as language, literacy and numeracy; and occupational health and safety requirements. The units of competency must be adhered to in training and assessment to ensure consistency of outcomes.

Assessment Guidelines

The Assessment Guidelines provide an industry framework to ensure all assessments meet industry needs and nationally agreed standards as expressed in the Training Package and the AQTF 2010. The Assessment Guidelines must be followed to ensure the integrity of assessment leading to nationally recognised qualifications.

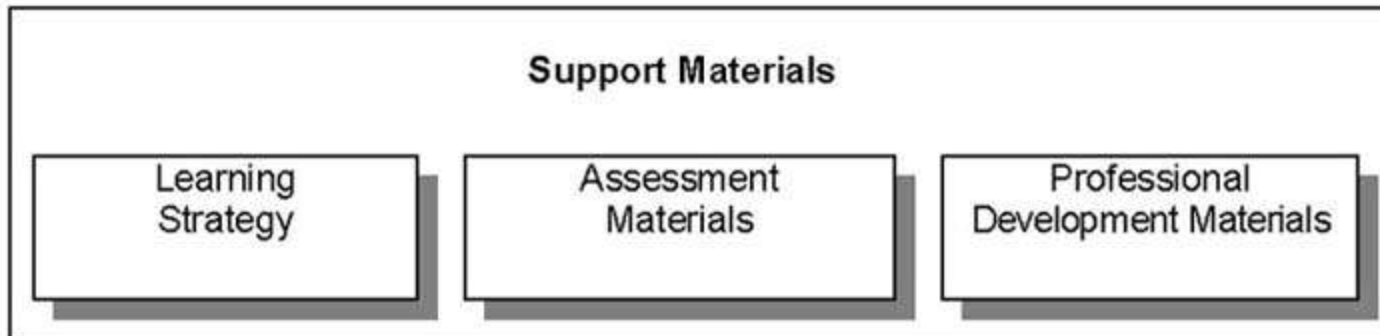
Qualifications Framework

Each Training Package provides details of those units of competency that must be achieved to award AQF qualifications. The rules around which units of competency can be combined to make up a valid AQF qualification in the Training Package are referred to as the 'packaging rules'. The packaging rules must be followed to ensure the integrity of nationally recognised qualifications issued.

Training Package Support Materials

The endorsed components of Training Packages are complemented and supported by optional support materials that provide for choice in the design of training and assessment to meet the needs of industry and learners.

Training Package support materials can relate to single or multiple units of competency, an industry sector, a qualification or the whole Training Package. They tend to fall into one or more of the categories illustrated below.



Training Package support materials are produced by a range of stakeholders such as RTOs, individual trainers and assessors, private and commercial developers and Government agencies.

Training Package, Qualification and Unit of Competency Codes

There are agreed conventions for the national codes used for Training Packages and their components. Always use the correct codes, exactly as they appear in the Training Package, **and with the code always before the title.**

Training Package Codes

Each Training Package has a unique five-character national code assigned when the Training Package is endorsed, for example FPI05. The first three characters are letters identifying the Training Package industry coverage and the last two characters are numbers identifying the year of endorsement.

Qualification Codes

Within each Training Package, each qualification has a unique eight-character code, for example FPI50111.

- the first three letters identify the Training Package;
- the first number identifies the qualification level (noting that, in the qualification titles themselves, arabic numbers are **not** used;
- the next two numbers identify the position in the sequence of the qualification at that level; and
- the last two numbers identify the year in which the qualification was endorsed. (Where qualifications are added after the initial Training Package endorsement, the last two numbers may differ from other Training Package qualifications as they identify the year in which those particular qualifications were endorsed.)

Unit of Competency Codes

Within each Training Package, each unit of competency has a unique code. The unit of competency codes are assigned when the Training Package is endorsed, or when new units of competency are added to an existing endorsed Training Package.

- a typical code is made up of 12 characters, normally a mixture of uppercase letters and numbers, as in FPISAW2201A;
- the first three characters signify the Training Package (FPI11 Forest and Forest Products Training Package in the above example) and up to eight characters, relating to an industry sector, function or skill area, follow;
- the last character is always a letter and identifies the unit of competency version. An 'A' at the end of the code indicates that this is the original unit of competency. 'B', or another incremented version identifier means that minor changes have been made. Typically this would mean that wording has changed in the range statement or evidence guide, providing clearer intent; and where changes are made that alter the outcome, a new code is assigned and the title is changed.

The uppercase letters in the codes for Forest and Forest Products Industry units of competency correspond to the industry sectors as follows:

| | |
|---------------|--|
| FPICOR | Denotes Core units of competency |
| FPICOT | Denotes Common Technical units of competency (which are common to more than one sector of the industry) |

| | |
|----------------|--|
| FPIFGM | Denotes units of competency within the Forest Growing and Management sector |
| FPIHAR | Denotes units of competency within the Harvesting and Haulage sector |
| FPISAW | Denotes units of competency within the Sawmilling and Processing sector |
| FPIWPP | Denotes units of competency within the Wood Panel and Board Production sector |
| FPI TMM | Denotes units of competency within the Timber Manufactured Products and Timber Merchandising sector |

Imported units of competency retain the codes from their Training Package of origin.

Contextualisation Advice for Unit of Competency Codes in FPI11

Unit of Competency version control in this Training Package uses a new explicit 'Revision Number' as follows:

- Revision 1 indicates that this is the original unit of competency.
- Revision 2 or above means that minor changes have been made. For example FPICOT2235A becomes FPICOT2235A, Revision 2 rather than FPICOT2235B. Typically this level of revision would mean that wording has changed in the range statement or evidence guide, providing clearer unit intent.

The individual Unit of Competency 'Revision Number' is displayed in training.gov.au (TGA) and on the cover page of the published unit. The FPI11 Training Package incorporates these changes as follow:

- Codes allocated before the introduction of TGA will be retained indefinitely. However, the 'A', 'B', 'C' component of the code will no longer be incremented. Instead an explicit Unit of Competency 'Revision Number' will be used
- New unit codes will not include an 'A', 'B', 'C' suffix. As such all new codes will contain 11 Characters. For example FPIFGM3212
- Where changes are made that alter the outcome of the unit, a new code is assigned and the title is changed.

Training Package, Qualification and Unit of Competency Titles

There are agreed conventions for titling Training Packages and their components. Always use the correct titles, exactly as they appear in the Training Package, and with the code always placed before the title.

Training Package Titles

The title of each endorsed Training Package is unique and relates the Training Package's broad industry coverage.

Qualification Titles

The title of each endorsed Training Package qualification is unique. Qualification titles use the following sequence:

- first, the qualification is identified as either Certificate I, Certificate II, Certificate III, Certificate IV, Diploma, Advanced Diploma, Vocational Graduate Certificate, or Vocational Graduate Diploma;
- this is followed by the words 'in' for Certificates I to IV, and 'of' for Diploma, Advanced Diploma, Vocational Graduate Certificate and Vocational Graduate Diploma;

- then, the industry descriptor, for example Telecommunications; and
- then, if applicable, the occupational or functional stream in brackets, for example (Computer Systems).

For example:

- FPI20111 Certificate II in Forest Growing and Management
- FPI50111 Diploma of Forest and Forest Products.

Unit of Competency Titles

Each unit of competency title is unique. Unit of competency titles describe the competency outcome concisely, and are written in sentence case.

For example:

- FPICOT2201B Stack and bind material
- FPISAW3201B Treat timber.
-

Introduction to FPI11 V2.1

The Industry

The Forest and Forest Products Industry covers a diverse range of activities from growing and management of plantation and native forest resources, through harvesting, sawmilling and processing, to the manufacture, merchandising and retailing of finished products.

The industry is characterised by a mix of small, medium and large enterprises. Some enterprises show a high degree of vertical integration, being involved in activities across the six industry sectors. The six industry sectors are:

- Forest Growing and Management
- Harvesting and Haulage
- Sawmilling and Processing
- Timber Manufactured Products
- Timber Merchandising
- Wood Panel Products.

Forest Growing and Management has traditionally been dominated by very large organisations, usually either State owned, or associated with large downstream manufacturing operations. A new category of forest growers are the agroforesters, or farm foresters, who often run plantations as micro-businesses attached to a commercial farm.

Activities in the Forest Growing and Management sector generally involve the planting, tending, protection and preparation of trees for harvesting, including the general environmental management of the land and land usage. Forests are maintained not only for the production of timber products, but for conservation, land protection, recreational, social and scientific purposes.

Harvesting and Haulage typically involves small enterprises employing the 4-6 people needed to run a single logging crew. Harvesting operators usually have a contractual relationship with their suppliers (forest owners) and customers (sawmillers and manufacturers of various types), rather than an open-market relationship.

Forest harvesting is carried out in both native hardwood forests and softwood or hardwood plantations. Jobs in this sector, typically involving outdoor work, can include activities such as construction of roads and log-landings, harvesting trees either mechanically or manually, plant and equipment operation, shifting tree lengths into various products and grades of product, grading of sawlogs, loading logs for delivery to specified processing plants, and undertaking rehabilitation works to rejuvenate forest coupes (areas from which trees are harvested).

Sawmilling and Processing is comprised of small, medium and large organisations that undertake a range of activities. These include log sawmilling, production of hardwood and softwood chips for use by other sectors of the industry, and value adding through planing and moulding activities (including finger jointing), preservative treatment, kiln drying, the production of landscape bark and chips, production of flooring and joinery products, component manufacturing and planing, moulding and machining.

Increasingly, enterprises involved in sawmilling and processing are highly mechanised and rely on computer technology to control the production process.

Timber Manufactured Products comprises small, medium and large enterprises and is involved in the production of a wide range of products including doors, windows and prefabricated trusses and frames, for the construction industry. Other enterprises produce pallets, casks, boxes, crates etc. for agricultural and industrial use.

Enterprises employ skilled tradespeople (eg carpenters, joiners, builders and maintenance mechanics) as well.

Timber Merchandising outlets range from small ‘corner-shop’ timber and hardware stores to large national chains. Industry seems to be trending away from small independent stores towards larger businesses, or groups of small businesses coming together under the banner of a franchise. This sector includes:

- Wholesale distributors who import timber and wood or buy from local manufacturers for sale to merchants and other large volume clients. They are often associated with large timber producers and are usually based in capital cities or major regional centres.
- Merchants who sell to trade users of timber products. They usually handle many different types of timber species and products, bought from a large number of suppliers. They may provide ancillary services, eg. Quantities and sizes to order, drying, moulding etc.
- Retailers who sell timber products and associated hardware in smaller quantities to individual tradespeople and the general public. The emphasis is on display, customer service and packaging.
- **Wood Panel Products** is predominantly comprised of large enterprises due to high costs involved in establishing efficient production facilities. Activities in the wood panel products sector include the manufacture of veneers, plywood, particle board and medium density fibre board (MDF).

The manufacture of wood panel products is a highly mechanised, technology driven production process.

Qualifications Framework

What is the Australian Qualifications Framework?

A brief overview of the Australian Qualifications Framework (AQF) follows. For a full explanation of the AQF, see the *AQF Implementation Handbook*.

<http://www.aqf.edu.au/wp-content/uploads/2013/05/AQF-2nd-Edition-January-2013.pdf>

The AQF provides a comprehensive, nationally consistent framework for all qualifications in post-compulsory education and training in Australia. In the vocational education and training (VET) sector it assists national consistency for all trainees, learners, employers and providers by enabling national recognition of qualifications and Statements of Attainment.

Training Package qualifications in the VET sector must comply with the titles and guidelines of the AQF. Endorsed Training Packages provide a unique title for each AQF qualification which must always be reproduced accurately.

Qualifications

Training Packages can incorporate the following eight AQF qualifications.

- Certificate I in ...
- Certificate II in ...
- Certificate III in ...
- Certificate IV in ...
- Diploma of ...
- Advanced Diploma of ...
- Vocational Graduate Certificate of ...
- Vocational Graduate Diploma of ...

On completion of the requirements defined in the Training Package, a Registered Training Organisation (RTO) may issue a nationally recognised AQF qualification. Issuance of AQF qualifications must comply with the advice provided in the *AQF Implementation Handbook* and the AQTF 2010 *Essential Standards for Initial and Continuing Registration*.

Statement of Attainment

A Statement of Attainment is issued by a Registered Training Organisation when an individual has completed one or more units of competency from nationally recognised qualification(s)/courses(s). Issuance of Statements of Attainment must comply with the advice provided in the current *AQF Implementation Handbook* and the AQTF 2010 *Essential Standards for Initial and Continuing Registration*.

Under the AQTF 2010, RTOs must recognise the achievement of competencies as recorded on a qualification or Statement of Attainment issued by other RTOs. Given this, recognised competencies can progressively build towards a full AQF qualification.

AQF Guidelines and Learning Outcomes

The *AQF Implementation Handbook* provides a comprehensive guideline for each AQF qualification. A summary of the learning outcome characteristics and their distinguishing features for each VET related AQF qualification is provided below.

Certificate I

Characteristics of Learning Outcomes

Breadth, depth and complexity of knowledge and skills would prepare a person to perform a defined range of activities most of which may be routine and predictable.

Applications may include a variety of employment related skills including preparatory access and participation skills, broad-based induction skills and/or specific workplace skills. They may also include participation in a team or work group.

Distinguishing Features of Learning Outcomes

Do the competencies enable an individual with this qualification to:

- demonstrate knowledge by recall in a narrow range of areas;
- demonstrate basic practical skills, such as the use of relevant tools;
- perform a sequence of routine tasks given clear direction
- receive and pass on messages/information.

Certificate II

Characteristics of Learning Outcomes

Breadth, depth and complexity of knowledge and skills would prepare a person to perform in a range of varied activities or knowledge application where there is a clearly defined range of contexts in which the choice of actions required is usually clear and there is limited complexity in the range of operations to be applied.

Performance of a prescribed range of functions involving known routines and procedures and some accountability for the quality of outcomes.

Applications may include some complex or non-routine activities involving individual responsibility or autonomy and/or collaboration with others as part of a group or team.

Distinguishing Features of Learning Outcomes

Do the competencies enable an individual with this qualification to:

- demonstrate basic operational knowledge in a moderate range of areas;
- apply a defined range of skills;
- apply known solutions to a limited range of predictable problems;
- perform a range of tasks where choice between a limited range of options is required;
- assess and record information from varied sources;
- take limited responsibility for own outputs in work and learning.

Certificate III

Characteristics of Learning Outcomes

Breadth, depth and complexity of knowledge and competencies would cover selecting, adapting and transferring skills and knowledge to new environments and providing technical advice and some leadership in resolution of specified problems. This would be applied across a range of roles in a variety of contexts with some complexity in the extent and choice of options available.

Performance of a defined range of skilled operations, usually within a range of broader related activities involving known routines, methods and procedures, where some discretion and judgement is required in the selection of equipment, services or contingency measures and within known time constraints.

Applications may involve some responsibility for others. Participation in teams including group or team co-ordination may be involved.

Distinguishing Features of Learning Outcomes

Do the competencies enable an individual with this qualification to:

- demonstrate some relevant theoretical knowledge
- apply a range of well-developed skills
- apply known solutions to a variety of predictable problems
- perform processes that require a range of well-developed skills where some discretion and judgement is required
- interpret available information, using discretion and judgement
- take responsibility for own outputs in work and learning
- take limited responsibility for the output of others.

Certificate IV

Characteristics of Learning Outcomes

Breadth, depth and complexity of knowledge and competencies would cover a broad range of varied activities or application in a wider variety of contexts most of which are complex and non-routine. Leadership and guidance are involved when organising activities of self and others as well as contributing to technical solutions of a non-routine or contingency nature. Performance of a broad range of skilled applications including the requirement to evaluate and analyse current practices, develop new criteria and procedures for performing current practices and provision of some leadership and guidance to others in the application and planning of the skills. Applications involve responsibility for, and limited organisation of, others.

Distinguishing Features of Learning Outcomes

Do the competencies enable an individual with this qualification to:

- demonstrate understanding of a broad knowledge base incorporating some theoretical concepts
- apply solutions to a defined range of unpredictable problems
- identify and apply skill and knowledge areas to a wide variety of contexts, with depth in some areas
- identify, analyse and evaluate information from a variety of sources
- take responsibility for own outputs in relation to specified quality standards
- take limited responsibility for the quantity and quality of the output of others.

Diploma

Characteristics of Learning Outcomes

Breadth, depth and complexity covering planning and initiation of alternative approaches to skills or knowledge applications across a broad range of technical and/or management requirements, evaluation and co-ordination.

The self directed application of knowledge and skills, with substantial depth in some areas where judgment is required in planning and selecting appropriate equipment, services and techniques for self and others.

Applications involve participation in development of strategic initiatives as well as personal responsibility and autonomy in performing complex technical operations or organising others. It may include participation in teams including teams concerned with planning and evaluation functions. Group or team co-ordination may be involved.

The degree of emphasis on breadth as against depth of knowledge and skills may vary between qualifications granted at this level.

Distinguishing Features of Learning Outcomes

Do the competencies or learning outcomes enable an individual with this qualification to:

- demonstrate understanding of a broad knowledge base incorporating theoretical concepts, with substantial depth in some areas
- analyse and plan approaches to technical problems or management requirements
- transfer and apply theoretical concepts and/or technical or creative skills to a range of situations
- evaluate information, using it to forecast for planning or research purposes
- take responsibility for own outputs in relation to broad quantity and quality parameters
- take some responsibility for the achievement of group outcomes.

Advanced Diploma

Characteristics of Learning Outcomes

Breadth, depth and complexity involving analysis, design, planning, execution and evaluation across a range of technical and/or management functions including development of new criteria or applications or knowledge or procedures.

The application of a significant range of fundamental principles and complex techniques across a wide and often unpredictable variety of contexts in relation to either varied or highly specific functions. Contribution to the development of a broad plan, budget or strategy is involved and accountability and responsibility for self and others in achieving the outcomes is involved.

Applications involve significant judgement in planning, design, technical or leadership/guidance functions related to products, services, operations or procedures. The degree of emphasis on breadth as against depth of knowledge and skills may vary between qualifications granted at this level.

Distinguishing Features of Learning Outcomes

Do the competencies or learning outcomes enable an individual with this qualification to:

- demonstrate understanding of specialised knowledge with depth in some areas
- analyse, diagnose, design and execute judgements across a broad range of technical or management functions
- generate ideas through the analysis of information and concepts at an abstract level
- demonstrate a command of wide-ranging, highly specialised technical, creative or conceptual skills
- demonstrate accountability for personal outputs within broad parameters
- demonstrate accountability for personal and group outcomes within broad parameters.

Vocational Graduate Certificate

Characteristics of competencies or learning outcomes

- The self-directed development and achievement of broad and specialised areas of knowledge and skills, building on prior knowledge and skills.
- Substantial breadth and complexity involving the initiation, analysis, design, planning, execution and evaluation of technical and management functions in highly varied and highly specialised contexts.
- Applications involve making significant, high-level, independent judgements in major broad or planning, design, operational, technical and management functions in highly varied and specialised contexts. They may include responsibility and broad-ranging accountability for the structure, management and output of the work or functions of others.
- The degree of emphasis on breadth, as opposed to depth, of knowledge and skills may vary between qualifications granted at this level.

Distinguishing features of learning outcomes

- Demonstrate the self-directed development and achievement of broad and specialised areas of knowledge and skills, building on prior knowledge and skills.
- Initiate, analyse, design, plan, execute and evaluate major broad or technical and management functions in highly varied and highly specialised contexts.
- Generate and evaluate ideas through the analysis of information and concepts at an abstract level.
- Demonstrate a command of wide-ranging, highly specialised technical, creative or conceptual skills in complex contexts.
 - Demonstrate responsibility and broad-ranging accountability for the structure, management and output of the work or functions of others.

Vocational Graduate Diploma

Characteristics of competencies or learning outcomes

- The self-directed development and achievement of broad and specialised areas of knowledge and skills, building on prior knowledge and skills.
- Substantial breadth, depth and complexity involving the initiation, analysis, design, planning, execution and evaluation of major functions, both broad and highly specialised, in highly varied and highly specialised contexts.
- Further specialisation within a systematic and coherent body of knowledge.
- Applications involve making high-level, fully independent, complex judgements in broad planning, design, operational, technical and management functions in highly varied and highly specialised contexts. They may include full responsibility and accountability for all aspects of work and functions of others, including planning, budgeting and strategy development.
- The degree of emphasis on breadth, as opposed to depth, of knowledge and skills may vary between qualifications granted at this level.

Distinguishing features of learning outcomes

- Demonstrate the self-directed development and achievement of broad and highly specialised areas of knowledge and skills, building on prior knowledge and skills.
- Initiate, analyse, design, plan, execute and evaluate major functions, both broad and within highly varied and highly specialised contexts.
- Generate and evaluate complex ideas through the analysis of information and concepts at an abstract level.
- Demonstrate an expert command of wide-ranging, highly specialised, technical, creative or conceptual skills in complex and highly specialised or varied contexts.
- Demonstrate full responsibility and accountability for personal outputs.
- Demonstrate full responsibility and accountability for all aspects of the work or functions of others, including planning, budgeting and strategy.

Qualifications and Packaging Rules

Forest and Forest Products Industry Qualifications

Background

The qualifications structure of FPI11:

- supports both general and sector specific qualification pathways
- provides effective qualifications at the higher AQF levels (Certificate IV and Diploma) that suit industry needs for a technical qualification and a management focused qualification, or a balance of both
- provides qualifications consisting of a small core to ensure flexibility by allowing people to choose electives to suit their job outcomes and future job choices
- allows achievement of 'skills sets' within qualifications if achievement of a total qualification is not required.

The qualifications structure incorporates the outcomes of extensive industry consultation which determined that qualifications should:

- provide maximum flexibility to allow enterprises and individuals to select combinations of units of competency relevant to their training needs
- reflect any State or Territory licensing requirements
- recognise different entry points and development pathways
- recognise the trades of Sawdoctoring and Woodmachining as discrete qualifications
- reflect realities in terms of work organisation and job design
- allow for articulation between qualifications
- create career path opportunities for people within the industry.

Structure of the Qualifications

The qualification packaging rules provide maximum flexibility through the identification of mandatory units to meet occupational requirements, provision of a choice of electives to ensure enterprise needs are met, and the incorporation of relevant units from other endorsed Training Packages to facilitate portability of qualifications.

Units within qualifications are arranged in the following broad categories:

- **Core Units**

Includes identified compulsory or 'core' units which provide generic skills, for example in areas such as communication, OHS, working effectively, quality, the environment, teamwork and first aid.

- **Elective Units**

Includes 'sector' electives to meet the requirements of technical functional areas. Units have been placed into specialist 'streams' or skills sets such as fire control, harvesting operations, timber products, sawing operations, merchandising etc. Units in this group are generally technical in nature with outcomes directly relevant to the Forest and Forest Products Industry. Includes 'common' electives to meet the requirements of common functional areas. Units have been placed into streams such as administration and business, load handling, communication and relationships, machinery and equipment etc. Units in this group are generally cross-industry in nature.

FPI11 allows customisation of qualifications through a choice of up to two or three (depending on the qualification) electives from FPI11, other nationally endorsed Training Packages, or State/Territory accredited courses. Generally, electives from this category must be either aligned to the same AQF level outcomes, or aligned to one AQF level up or down from the level of the qualification.

The packaging of the units of competency complements, but does not infringe on the responsibilities and requirements of State and Territory based regulatory authorities. An individual seeking a qualification for a position covered by State or Territory regulatory requirements should check with the relevant Act and regulatory authority, the employer and the RTO providing the training and assessment, when selecting elective units of competency to complete a qualification.

Access, Equity and Cultural Diversity

The skills required of employees in the Forest and Forest Products Industry are comprehensive and many employment opportunities are available. The qualifications in this Training Package reflect the required range of competencies and are written in a non-exclusive manner so as to increase the participation rates of all equity and disadvantaged groups and to minimise unintentional bias.

The Forest and Forest Products Industry recognises the importance of access and equity and is committed to ensuring that access to employment and training is available regardless of gender, socio-economic background, disability, ethnic origin, age or race. Catering for differences may involve adapting the physical environment, equipment, and training and assessment materials for learners. An inclusive environment is one that acknowledges and values the variations between people and cultures. It recognises and embraces difference and provides the means by which all clients have the greatest opportunity to achieve their goals.

Qualification Pathways

The following pathways charts are provided to show the types of pathways into and from qualifications that are possible with this Training Package. For more information about qualifications and pathways contact ForestWorks ISC.

PO Box 612

NORTH MELBOURNE VICTORIA 3051

Ph: +61 1800 177 001

Fax: +61 3 9326 7800

Email: forestworks@forestworks.com.au

Web: www.forestworks.com.au

Forest and Forest Products Industry qualifications can be achieved via a variety of pathways and training delivery and assessment options. Possible pathways include:

- work-based training and assessment
- a mixture of institution-based training and assessment and work-based training and assessment
- recognition of prior learning and current competency (RPL/RCC)
- recognition of prior learning combined with further training, as required.

In considering pathways it is important to note that assessment for the issuing of an AQF qualification in some sectors of the Forest and Forest Products Industry may be conducted in the workplace or in a simulated situation where issues of safety and/or environmental damage are limiting factors. On-the-job assessment conducted in the workplace or in a simulated situation ensures that candidates can function effectively in the real work environment and that the competencies assessed are relevant to the work site or industry.

This Training Package provides open entry at each of the AQF levels. Open entry is available at all levels provided the prospective learner's general education and competency level is equivalent to the outcome of four to five years of secondary school. Additionally, entry levels provide an option for potential learners to choose a qualification suited to their needs while providing flexibility for recruitment action by employers. Entry into all qualifications is also available through progression from a lower level qualification, and Recognition of Prior Learning (RPL) arrangements.

Sector Qualifications

Entry-level qualification

The FPI1011 Certificate I in Forest and Forest Products is an 'entry-level' qualification within the Training Package to cover the basic entry level functions of an operator in the industry. These include core skills and knowledge relating to communication, working effectively in the industry, following environmental care and OHS procedures, and maintaining quality and product care.

Forest Growing and Management Sector

In general, jobs in this sector are focused at AQF levels 2 and 3 covering a range of activities from planting, weeding, pruning and pest management, to falling trees, fire management and construction and maintenance of roads. Two qualifications at these levels are provided for employees in the Forest Growing and Management sector:

- FPI20113 Certificate II in Forest Growing and Management, and
- FPI30113 Certificate III in Forest Growing and Management.

This sector also calls for higher level technical skills in forest management, with a natural progression to the FPI40111 Certificate IV in Forest Operations. This qualification provides a balance of supervisory functions together with technical skills in areas such as fire control, breeding and propagation, site establishment and maintenance, tree growing and maintenance.

Harvesting and Haulage Sector

Jobs in this sector are mainly focused at the operator level at AQF 3. The sector covers a range of activities from construction of roads and log-landings, plant and equipment operation, harvesting trees, to stump removal and segregating or sorting logs. Two qualifications at AQF levels 2 and 3 are provided for employees in the Harvesting and Haulage sector:

- FPI20213 Certificate II in Harvesting and Haulage, and
- FPI30213 Certificate III in Harvesting and Haulage.

A natural path for these operators is progression to the FPI40111 Certificate IV in Forest Operations which provides a balance of supervisory responsibilities together with technical skills in areas such as fire control, harvesting operations, machinery and equipment.

Sawmilling and Processing Sector

Jobs in this sector are focused at AQF levels 2 and 3 covering a range of activities from sawing logs, producing hardwood or softwood chips, kiln drying, conducting end matching and finger jointing operations, to weighing loads. Two qualifications at these levels are provided for employees in the Sawmilling and Processing sector:

- FPI20311 Certificate II in Sawmilling and Processing, and
- FPI30311 Certificate III in Sawmilling and Processing.

A natural path for these operators is progression to the FPI40211 Certificate IV in Timber Processing which provides a balance of supervisory responsibilities together with technical skills in areas such as grading and testing, timber treatment and drying, sawing operations and competitive manufacturing.

Wood Panel Products Sector

Jobs in this sector are focused at AQF levels 2 and 3 covering a range of activities from producing veneer, machining panel, laminating boards and assembling products, to chipping or flaking wood and cutting panels to profile. Two qualifications at these levels are provided for employees in the Wood Panel Products sector:

- FPI20411 Certificate II in Wood Panel Products, and
- FPI30411 Certificate III in Wood Panel Products.

A natural path for these operators is progression to the FPI40211 Certificate IV in Timber Processing which provides a balance of supervisory responsibilities together with technical skills in areas such as board and veneer production, timber products, timber treatment and drying, grading and testing and competitive manufacturing.

Timber Manufactured Products Sector

Jobs in this sector are focused at AQF levels 2 and 3 covering a range of activities from dressing boards and timber, cutting material using computer programmed machinery to assembling products. Two qualifications at these levels are provided for employees in the Timber Manufactured Products sector:

- FPI20511 Certificate II in Timber Manufactured Products, and
- FPI30511 Certificate III in Timber Manufactured Products.

A natural path for these operators is progression to the FPI40211 Certificate IV in Timber Processing which provides a balance of supervisory responsibilities together with technical skills in areas such as grading and testing, timber products, trusses and frames, logyard and material preparation and competitive manufacturing.

Additionally, qualifications designed specifically for the Truss and Frame sector of the industry now cover the complete range of jobs in both manufacture and design in this highly specialised area:

- FPI20711 Certificate II in Timber Truss and Frame Design and Manufacture
- FPI30911 Certificate III in Timber Truss and Frame Design and Manufacture
- FPI40311 Certificate IV in Timber Truss and Frame Manufacture
- FPI40411 Certificate II in Timber Truss and Frame Design
- FPI50311 Diploma of Timber Truss and Frame Manufacture
- FPI50411 Diploma of Timber Truss and Frame Design

Timber Merchandising Sector

Jobs in this sector are focused at AQF levels 2 and 3 covering a range of activities from stock control, estimating and costing jobs, cutting and machining material and grading products, to sales and customer service. Two qualifications at these levels are provided for employees in the Timber Merchandising sector:

- FPI20611 Certificate II in Timber Merchandising, and
- FPI30611 Certificate III in Timber Merchandising.

A natural path for these operators is progression to the FPI40211 Certificate IV in Timber Processing which provides a balance of supervisory responsibilities together with technical skills in areas such as logyard and material preparation and retail.

Trades

There are two trade qualifications at the AQF 3 level. The FPI30711 Certificate III in Sawdoctoring provides specialist coverage of sawdoctoring competencies, for example hand sharpening knives and blades, welding, aligning sawing production systems and assessing and maintaining saw and cutter performance. This qualification will ensure the integrity of the sawdoctoring trade by maintaining an appropriate depth of knowledge and skills and level of technical competence in sawdoctoring.

The FPI30811 Certificate III in Woodmachining also provides some specialist coverage of sawdoctoring competencies, but has a focus on an in-depth knowledge of timber technology. Progression from the trades would naturally be to FPI40211 Certificate IV in Timber Processing.

Diploma Qualifications

The FPI50111 Diploma of Forest and Forest Products provides a management pathway for all qualifications within the Training Package. While there is a balance between technical and generic management outcomes within the qualification, there is an emphasis on management, for example in areas such as planning and managing inventory programs, genetic resources, propagation programs, native forest regeneration, product design and panel production.

Diploma qualifications for the Timber Truss and Frame:

FPI50311 Diploma of Timber Truss and Frame Manufacture

FPI50411 Diploma of Timber Truss and Frame Design

Advanced Diploma Qualification

The FPI60113 Advanced Diploma of Forest Industry Sustainability recognises the emerging needs of the industry to provide pathways and links to the higher education sector via graduate certificate or degree programs in forestry or environmental science such as the new Graduate Certificate in Timber (Processing and Building) at the Centre for Sustainable Architecture with Wood, University of Tasmania.

Introduction to the Industry

Introduction to the Industry

The Forest and Forest Products Industry covers a diverse range of activities from growing and management of plantation and native forest resources, through harvesting, sawmilling and processing, to the manufacture, merchandising and retailing of finished products.

The industry is characterised by a mix of small, medium and large enterprises. Some enterprises show a high degree of vertical integration, being involved in activities across the six industry sectors. The six industry sectors are:

- Forest Growing and Management
- Harvesting and Haulage
- Sawmilling and Processing
- Timber Manufactured Products
- Timber Merchandising
- Wood Panel Products.

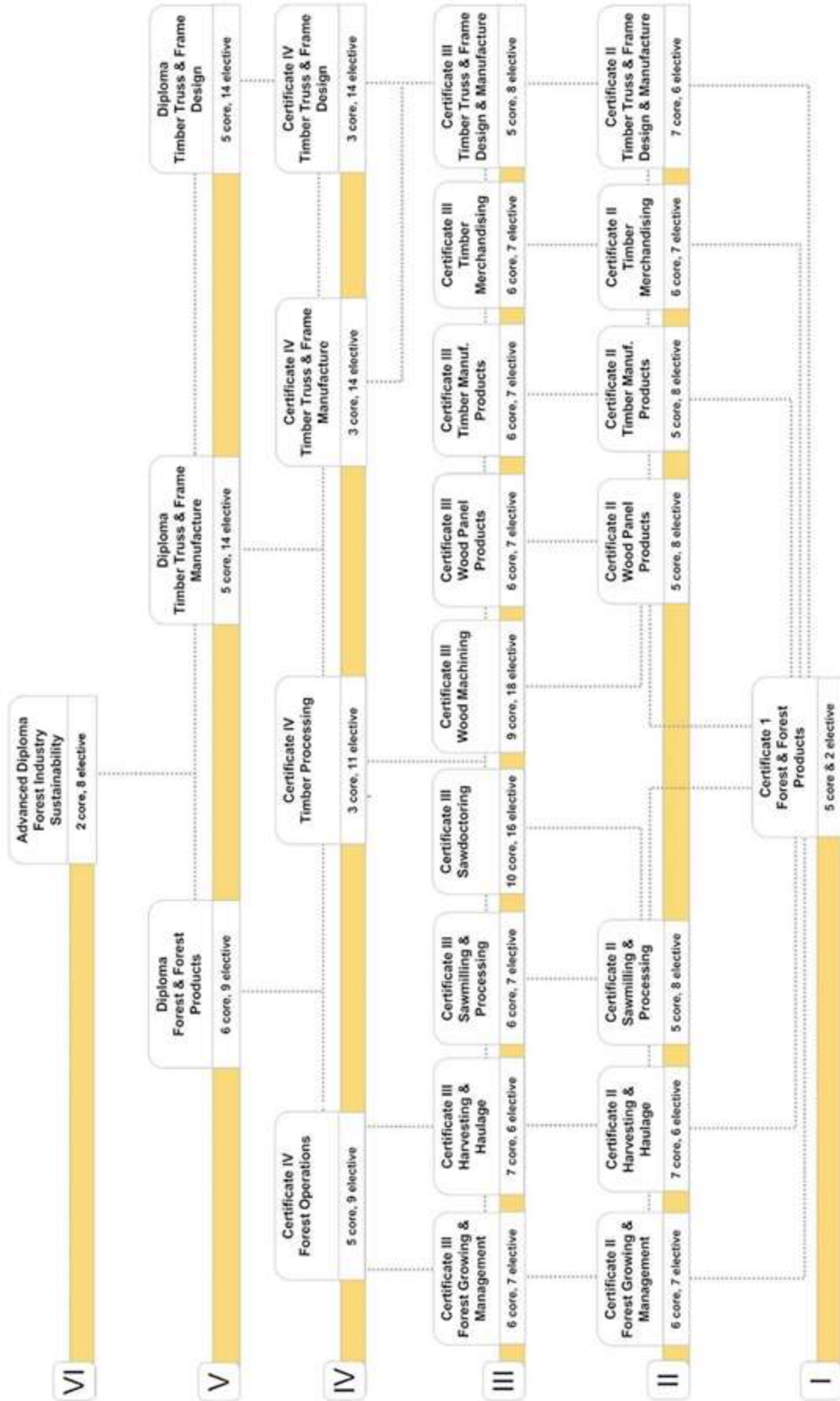
Skill Sets in this Training Package

| |
|---|
| Skill set for a boom delimeter operator |
| Skill set for a crawler/dozer operator |
| Skill set for a feller buncher operator |
| Skill set for a forwarder operator |
| Skill set for a heavy production mobile chipper operator |
| Skill set for a loader operator |
| Skill set for a mechanical processor operator |
| Skill set for a native forest operator |
| Skill set for a plantation forest operator |
| Skill set for a single grip harvester operator |
| Skill set for a skidder operator |
| Skill set for an excavator operator |
| Skill set for fire salvage operations |
| Skill set for off road four wheel drive operations |
| Skill set for soil and water protection (roading) |
| Skill set for carbon accounting |
| Skill set for a forestry log truck driver |
| Skill set for a forestry produce truck driver |
| Skill set for a finger jointing grader operator |
| Skill set for a finger jointing moulder operator |
| Skill set for a finger jointing plant operator |
| Skill set for a finger jointing quality control tester |
| Skill set for forest and wood product innovation for leaders |
| Skill set for forest and wood product innovation for managers |

| |
|--|
| Skill set for supporting forest and wood products innovation |
| Skill set for managing change in the forest and wood products industry |
| Skill set for forest and wood products industry stakeholder engagement |
| Skill set for supporting workplace engagement in forest and wood products |
| Skill set for leading business development in the forest and wood products industry |
| Skill set for managing business development in the forest and wood products industry |
| Skill set for supporting business development in the forest and wood products industry |

Qualification Pathways

Pathways Chart - FPI11



Assessment Guidelines

Introduction

These Assessment Guidelines provide the endorsed framework for assessment of units of competency in this Training Package. They are designed to ensure that assessment is consistent with the *Australian Quality Training Framework (AQTF) Essential Standards for Initial and Continuing Registration*. Assessments against the units of competency in this Training Package must be carried out in accordance with these Assessment Guidelines.

Assessment System Overview

This section provides an overview of the requirements for assessment when using this Training Package, including a summary of the AQTF requirements; licensing and registration requirements; and assessment pathways.

Quality assessment underpins the credibility of the vocational education and training sector. The Assessment Guidelines of a Training Package are an important tool in supporting quality assessment.

Assessment within the National Skills Framework is the process of collecting evidence and making judgements about whether competency has been achieved to confirm whether an individual can perform to the standards expected in the workplace, as expressed in the relevant endorsed unit of competency.

Assessment must be carried out in accordance with the:

- benchmarks for assessment
- specific industry requirements
- principles of assessment
- rules of evidence
- assessment requirements set out in the AQTF

Benchmarks for Assessment

The endorsed units of competency in this Training Package are the benchmarks for assessment. As such, they provide the basis for nationally recognised Australian Qualifications Framework (AQF) qualifications and Statements of Attainment issued by Registered Training Organisations (RTOs).

Principles of Assessment

All assessments carried out by RTOs are required to demonstrate compliance with the principles of assessment:

- validity
- reliability
- flexibility
- fairness
- sufficiency

These principles must be addressed in the:

- design, establishment and management of the assessment system for this Training Package
- development of assessment tools, and
- the conduct of assessment.

Validity

Assessment is valid when the process is sound and assesses what it claims to assess. Validity requires that:

- (a) assessment against the units of competency must cover the broad range of skills and knowledge that are essential to competent performance
- (b) assessment of knowledge and skills must be integrated with their practical application
- (c) judgement of competence must be based on sufficient evidence (that is, evidence gathered on a number of occasions and in a range of contexts using different assessment methods). The specific evidence requirements of each unit of competency provide advice on sufficiency

Reliability

Reliability refers to the degree to which evidence presented for assessment is consistently interpreted and results in consistent assessment outcomes. Reliability requires the assessor to have the required competencies in assessment and relevant vocational competencies (or to assess in conjunction with someone who has the vocational competencies). It can only be achieved when assessors share a common interpretation of the assessment requirements of the unit(s) being assessed.

Flexibility

To be flexible, assessment should reflect the candidate's needs; provide for recognition of competencies no matter how, where or when they have been acquired; draw on a range of methods appropriate to the context, competency and the candidate; and support continuous competency development.

Fairness

Fairness in assessment requires consideration of the individual candidate's needs and characteristics, and any reasonable adjustments that need to be applied to take account of them. It requires clear communication between the assessor and the candidate to ensure that the candidate is fully informed about, understands and is able to participate in, the assessment process, and agrees that the process is appropriate. It also includes an opportunity for the person being assessed to challenge the result of the assessment and to be reassessed if necessary.

Sufficiency

Sufficiency relates to the quality and quantity of evidence assessed. It requires collection of enough *appropriate* evidence to ensure that all aspects of competency have been satisfied and that competency can be demonstrated repeatedly. Supplementary sources of evidence may be necessary. The specific evidence requirements of each unit of competency provide advice on sufficiency. Sufficiency is also one of the rules of evidence.

Rules of Evidence

The rules of evidence guide the collection of evidence that address the principles of validity and reliability, guiding the collection of evidence to ensure that it is valid, sufficient, current and authentic.

Valid

Valid evidence must relate directly to the requirements of the unit of competency. In ensuring evidence is valid, assessors must ensure that the evidence collected supports demonstration of the outcomes and performance requirements of the unit of competency together with the knowledge and skills necessary for competent performance. Valid evidence must encapsulate the breadth and depth of the unit of competency, which will necessitate using a number of different assessment methods.

Sufficient

Sufficiency relates to the quality and quantity of evidence assessed. It requires collection of enough appropriate evidence to ensure that all aspects of competency have been satisfied and that competency can be demonstrated repeatedly. Supplementary sources of evidence may be necessary. The specific evidence requirements of each unit of competency provide advice on sufficiency.

Current

In assessment, currency relates to the age of the evidence presented by a candidate to demonstrate that they are still competent. Competency requires demonstration of current performance, so the evidence collected must be from either the present or the very recent past.

Authentic

To accept evidence as authentic, an assessor must be assured that the evidence presented for assessment is the candidate's own work.

Assessment Requirements of the Australian Quality Training Framework

Assessment leading to nationally recognised AQF qualifications and Statements of Attainment in the vocational education and training sector must meet the requirements of the AQTF as expressed in the AQTF 2010 *Essential Standards for Registration*.

The AQTF 2010 *Essential Standards for Initial and Continuing Registration* can be downloaded from <www.training.com.au>.

The following points summarise the assessment requirements.

Registration of Training Organisations

Assessment must be conducted by, or on behalf of, an RTO formally registered by a State or Territory Registering Body in accordance with the AQTF. The RTO must have the specific units of competency and/or AQF qualifications on its scope of registration.

Quality Training and Assessment

Each RTO must provide quality training and assessment across all its operations. See the AQTF 2010 *Essential Standards for Initial and Continuing Registration*, Standard 1.

Assessor Competency Requirements

Each person involved in training and assessment must be competent for the functions they perform. See the AQTF 2010 *Essential Standards for Initial and Continuing Registration*, Standard 1 for assessor (and trainer) competency requirements. See also the AQTF 2010 *Users' Guide to the Essential Standards for Registration – Appendix 2*.

Assessment Requirements

The RTOs assessments, including RPL, must meet the requirements of the relevant endorsed Training Package. See the AQTF 2010 *Essential Standards for Initial and Continuing Registration*.

Assessment Strategies

Each RTO must have strategies for training and assessment that meet the requirements of the relevant Training Package or accredited course and are developed in consultation with industry stakeholders. See the AQTF 2010 *Essential Standards for Initial and Continuing Registration*.

National Recognition

Each RTO must recognise the AQF qualifications and Statements of Attainment issued by any other RTO. See the AQTF 2010 *Essential Standards for Initial and Continuing Registration*.

Access and Equity and Client Outcomes

Each RTO must adhere to the principles of access and equity and maximise outcomes for its clients. See the AQTF 2010 *Essential Standards for Initial and Continuing Registration*.

Monitoring Assessments

Training and/or assessment provided on behalf of the RTO must be monitored to ensure that it is in accordance with all aspects of the AQTF 2010 *Essential Standards for Initial and Continuing Registration*.

Recording Assessment Outcomes

Each RTO must manage records to ensure their accuracy and integrity. See the AQTF 2010 *Essential Standards for Initial and Continuing Registration*.

Issuing AQF qualifications and Statement of Attainment

Each RTO must issue AQF qualifications and Statements of Attainment that meet the requirements of the current *AQF Implementation Handbook* and the endorsed Training Packages within the scope of its registration. An AQF qualification is issued once the full requirements for a qualification, as specified in the nationally endorsed Training Package are met. A Statement of Attainment is issued when an individual has completed one or more units of competency from nationally recognised qualification(s)/courses(s). See the AQTF and the edition of the *AQF Implementation Handbook*—available on the AQF Council website <www.aqf.edu.au>

Licensing/Registration Requirements

This section provides information on licensing/registration requirements for this Training Package, with the following important disclaimer.

Licensing and registration requirements that apply to specific industries, and vocational education and training, vary between each State and Territory, and can regularly change. The developers of this Training Package, and DEEWR, consider that the licensing/registration requirements described in this section apply to RTOs, assessors or candidates with respect to this Training Package. While reasonable care has been taken in its preparation, the developers of this Training Package and DEEWR cannot guarantee that the list is definitive or accurate at the time of reading; the information in this section is provided in good faith on that basis.

Contact the relevant State or Territory Department(s) to check if the licensing/registration requirements described below still apply, and to check if there are any others with which you must comply. For further information contact <http://www.forestworks.com.au>.

| Jurisdiction: Australian Capital Territory | |
|--|--|
| License/ Registration | Website Details |
| Boom-type elevating work platform (boom length 11m or more) Forklift truck Front End Loader Front End Loader/Backhoe Front End Loader (Skid Steer type) Excavator | ACT Office of Regulatory Services www.ors.act.gov.au |
| Pest Management Technician Fumigator | WorkCover New South Wales www.workcover.nsw.gov.au (ACT operators are licensed via this NSW department) |
| Jurisdiction: New South Wales | |
| License/ Registration | Website Details |
| Boom-type elevating work platform (boom length 11m or more) Forklift truck Front End Loader Front End Loader/Backhoe Front End Loader (Skid Steer type) Excavator Pest Management Technician Fumigator | WorkCover New South Wales www.workcover.nsw.gov.au |
| Shot Firer | Department of Mineral Resources www.minerals.nsw.gov.au |
| Forest Operator Licence: <ul style="list-style-type: none"> • Chainsaw Operator • Manual Tree Faller • Machine Operator • Truck Driver • Log Grader/Segregator • Harvesting Supervisor | State Forests of NSW Forest Operator Licence information can be obtained by contacting your local NSW Department of Primary Industries (DPI) Office. Phone: 1300 655 687 See: |

| | |
|-----------------------------|---|
| • Other Operator (Mechanic) | http://www.dpi.nsw.gov.au/aboutus/about/office |
|-----------------------------|---|

| Jurisdiction: Northern Territory | |
|--|--|
| License/ Registration | Website Details |
| Industrial truck (forklift) operation Shot firer | NT WorkSafe www.worksafe.nt.gov.au |
| Pest Control Operator Provisional Pest Control Operator | Northern Territory Department of Health and Community Services www.nt.gov.au/health |
| Jurisdiction: Queensland | |
| License/ Registration | Website Details |
| Operator of a boom type elevating work platform with a boom length of 11m or more Operator of a dozer Operator of an excavator (engine capacity of more than 2L) Operator of a fork lift truck (other than pedestrian operated) Operator of a front end loader (engine capacity of more than 2L) Operator of a front end loader/backhoe (engine capacity of more than 2L) Operator of a grader Operator of a roller (engine capacity of more than 2L) Operator of a skid steer loader (engine capacity of more than 2L) Operator of a scraper | Workplace Health and Safety NT www.deir.qld.gov.au |
| Shot Firer | Department of Mines and Energy www.dme.qld.gov.au/mines |
| Pest Management Technician | Queensland Health |

| | |
|---|--|
| Jurisdiction: Northern Territory | |
| | www.health.qld.gov.au |
| Jurisdiction: South Australia | |
| License/ Registration | Website Details |
| Forklift truck Front End Loader Front End Loader/Backhoe Front End Loader (Skid Steer type) Excavator Dozer | South Australia Workcover Corporation www.workcover.com |
| Blaster | SafeWork SA www.safework.sa.gov.au |
| Pest Controller Pest Management Technician | Environment Protection Authority www.epa.sa.gov.au |
| Jurisdiction: Tasmania | |
| License/ Registration | Website Details |
| Boom-type elevating work platform (boom length 11m or more) Forklift truck | Workplace Standards Tasmania www.wst.tas.gov.au |
| Forest Operator Licence: <ul style="list-style-type: none"> • Dozer • Traxcavator • Skidder • Excavator • Fulghum Log Handler • Loader Operator • Log grader/Segregator • Chainsaw Operator • Mechanical Harvesting • Cable Logging | ForestWorks Tasmania Phone: (03) 6331 6077 See: http://www.forestworks.com.au/topics/7190.html |
| Pest Management Technician | Department of Primary Industries, Water and Environment |

| | |
|---|---|
| Jurisdiction: Northern Territory | |
| | www.dpiwe.tas.gov.au |
| Jurisdiction: Victoria | |
| License/ Registration | Website Details |
| Boom-type elevating work platform (boom length 11m or more) Forklift truck Front End Loader Front End Loader/Backhoe Front End Loader (Skid Steer type) Excavator | WorkSafe Victoria www.worksafe.vic.gov.au |
| Blasting explosives | Department of Primary Industries www.dpi.vic.gov.au |
| Timber Harvesting Operator's Licence: <ul style="list-style-type: none"> • Chainsaw Operator • Faller • Machine Operator • Truck Driver • Tree Climber | Department of Sustainability and Environment Phone: 136 186 See: http://www.dse.vic.gov.au/forests/publications/forest-information-sheets/forest-operators-licence |
| Pest Management Technician Pest Management Trainee | Department of Human Services www.dhs.vic.gov.au |
| Jurisdiction: Western Australia | |
| License/ Registration | Website Details |
| Forklift operation (optional) Boom-type elevating work platform (boom length 11m or more) | Department of Consumer and Employment Protection (Worksafe) www.safetyline.wa.gov.au |
| Shot Firer | Department of Commerce www.commerce.wa.gov.au |
| Pest Management Technician | Department of Health |

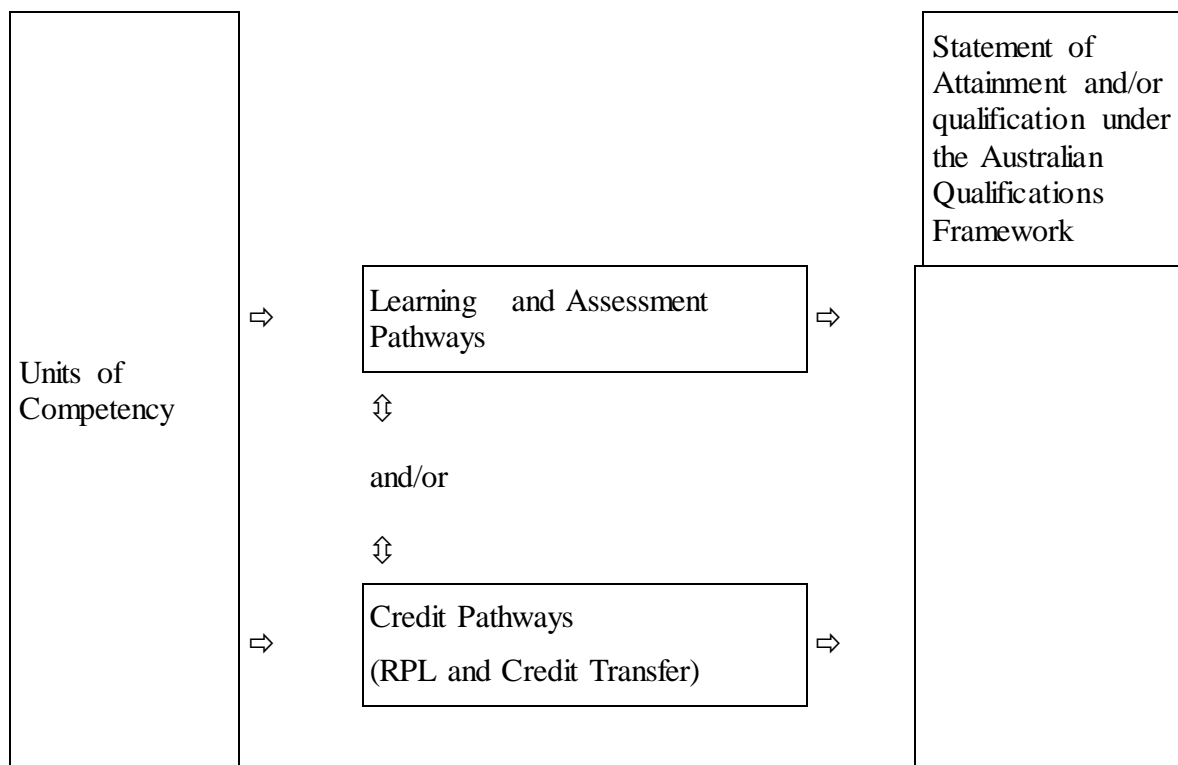
| | |
|----------------------------------|----------------------|
| Jurisdiction: Northern Territory | |
| Fumigator | www.health.wa.gov.au |

Pathways

The competencies in this Training Package may be attained in a number of ways including through:

- formal or informal education and training
- experiences in the workplace
- general life experience, and/or
- any combination of the above.

Assessment under this Training Package leading to an AQF qualification or Statement of Attainment may follow a learning and assessment pathway, or a recognition pathway, or a combination of the two as illustrated in the following diagram.



Each of these assessment pathways leads to full recognition of competencies held – the critical issue is that the candidate is competent, not how the competency was acquired. Assessment, by any pathway, must comply with the assessment requirements set out in the Assessment Guidelines of the Training Package, the AQTF and, where relevant, the Australian Qualifications Framework.

Learning and Assessment Pathways

Usually, learning and assessment are integrated, with evidence being collected and feedback provided to the candidate at anytime throughout the learning and assessment process. Learning and assessment pathways may include structured programs in a variety of contexts using a range of strategies to meet different learner needs. Structured learning and assessment programs could be: group-based, work-based, project-based, self-paced, action learning-based; conducted by distance or e-learning; and/or involve practice and experience in the workplace.

Learning and assessment pathways to suit Australian Apprenticeships have a mix of formal structured training and structured workplace experience with formative assessment activities through which candidates can acquire and demonstrate skills and knowledge from the relevant units of competency.

Credit Pathways

Credit is the value assigned for the recognition of equivalence in content between different types of learning and/or qualifications which reduces the volume of learning required to achieve a qualification.

Credit arrangements must be offered by all RTOs that offer Training Package qualifications. Each RTO must have a systematic institutional approach with clear, accessible and transparent policies and procedures.

Competencies already held by individuals can be formally assessed against the units of competency in this Training Package, and should be recognised regardless of how, when or where they were acquired, provided that the learning is relevant to the unit of competency outcomes.

Recognition of Prior Learning

Recognition of Prior Learning (RPL) is an assessment process which determines the credit outcomes of an individual application for credit.

The availability of Recognition of Prior Learning (RPL) provides all potential learners with access to credit opportunities.

The recognition of prior learning pathway is appropriate for candidates who have previously attained skills and knowledge and who, when enrolling in qualifications, seek to shorten the duration of their training and either continue or commence working. This may include the following groups of people:

- existing workers;
- individuals with overseas qualifications;
- recent migrants with established work histories;

- people returning to the workplace; and
- people with disabilities or injuries requiring a change in career.
-

As with all assessment, RPL assessment should be undertaken by academic or teaching staff with expertise in the subject, content of skills area, as well as knowledge of and expertise in RPL assessment policies and procedures.

Assessment methods used for RPL should provide a range of ways for individuals to demonstrate that they have met the required outcomes and can be granted credit. These might include:

- questioning (oral or written)
- consideration of a portfolio and review of contents
- consideration of third party reports and/or other documentation such as documentation such as articles, reports, project material, papers, testimonials or other products prepared by the RPL applicant that relate to the learning outcomes of the relevant qualification component
- mapping of learning outcomes from prior formal or non-formal learning to the relevant qualification components
- observation of performance, and
- participation in structured assessment activities the individual would normally be required to undertake if they were enrolled in the qualification component/s.

In a Recognition of Prior Learning (RPL) pathway, the candidate provides current, quality evidence of their competency against the relevant unit of competency. This process may be directed by the candidate and verified by the assessor. Where the outcomes of this process indicate that the candidate is competent, structured training is not required. The RPL requirements of the AQTF must be met.

As with all assessment, the assessor must be confident that the evidence indicates that the candidate is currently competent against the endorsed unit of competency. This evidence may take a variety of forms and might include certification, references from past employers, testimonials from clients, work samples and/or observation of the candidate. The onus is on candidates to provide sufficient evidence to satisfy assessors that they currently hold the relevant competencies. In judging evidence, the assessor must ensure that the evidence of prior learning is:

- authentic (the candidate's own work);
- valid (directly related to the current version of the relevant endorsed unit of competency);
- reliable (shows that the candidate consistently meets the endorsed unit of competency);
- current (reflects the candidate's current capacity to perform the aspect of the work covered by the endorsed unit of competency); and
- sufficient (covers the full range of elements in the relevant unit of competency and addresses the four dimensions of competency, namely task skills, task management skills, contingency management skills, and job/role environment skills).

Credit Transfer

Credit transfer is a process which provides learners with agreed and consistent credit outcomes based on equivalences in content between matched qualifications.

This process involves education institutions:

- mapping, comparing and evaluating the extent to which the defined *learning outcomes and assessment requirements* of the individual *components of one qualification* are equivalent to the learning outcomes and assessment requirements of the individual components of another qualification
- making an educational judgment of the credit outcomes to be assigned between the matched components of the two qualifications
- setting out the agreed credit outcomes in a documented arrangement or agreement, and
- publicising the arrangement/agreement and credit available.

Combination of Pathways

Credit may be awarded on the basis of a combination of credit transfer plus an individual RPL assessment for additional learning. Once credit has been awarded on the basis of RPL, subsequent credit transfer based on these learning outcomes should not include revisiting the RPL assessment but should be based on credit transfer or articulation or other arrangements between providers.

Where candidates for assessment have gained competencies through work and life experience and gaps in their competence are identified, or where they require training in new areas, a combination of pathways may be appropriate.

In such situations, the candidate may undertake an initial assessment to determine their current competency. Once current competency is identified, a structured learning and assessment program ensures that the candidate acquires the required additional competencies identified as gaps.

Assessor Requirements

This section identifies the specific requirements on the vocational competence and experience for assessors, to ensure that they meet the needs of industry and their obligations under AQTF, and clarifies how others may contribute to the assessment process where one person alone does not hold all the required competencies.

Assessor Competencies

The AQTF specifies mandatory competency requirements for assessors. For information, Element 1.4 from the AQTF 2007 *Essential Standards for Registration* follows:

- 1.4 Training and assessment are conducted by trainers and assessors who:
- a) have the necessary training and assessment competencies as determined by the National Quality Council or its successors, and
 - b) have the relevant vocational competencies at least to the level being delivered or assessed, and
 - c) can demonstrate current industry skills directly relevant to the training/assessment being undertaken, and
 - d) continue to develop their Vocational Education and Training (VET) knowledge and

skills as well as their industry currency and trainer/assessor competence.

* See AQTF 2010 *Users' Guide to the Essential Standards for Registration* – Appendix 2

Designing Assessment Tools

This section provides an overview on the use and development of assessment tools.

Use of Assessment Tools

Assessment tools provide a means of collecting the evidence that assessors use in making judgements about whether candidates have achieved competency.

There is no set format or process for the design, production or development of assessment tools. Assessors may use prepared assessment tools, such as those specifically developed to support this Training Package, or they may develop their own.

Using Prepared Assessment Tools

If using prepared assessment tools, assessors should ensure these relate to the current version of the relevant unit of competency. The current unit of competency can be checked on the National Register <www.ntis.gov.au>.

Developing Assessment Tools

When developing their own assessment tools, assessors must ensure that the tools:

- are benchmarked against the relevant unit or units of competency;
- are reviewed as part of the validation of assessment strategies required under the AQTF; and
- meet the assessment requirements expressed in the AQTF 2010 *Essential Standards for Initial and Continuing Registration*.

A key reference for assessors developing assessment tools is TAE10 Training and Education Training Package.

Language, Literacy and Numeracy

The design of assessment tools must reflect the language, literacy and numeracy competencies required for the performance of a task in the workplace and not exceed these expectations.

Conducting Assessment

This section details the mandatory assessment requirements and provides information on equity in assessment including reasonable adjustment.

Mandatory Assessment Requirements

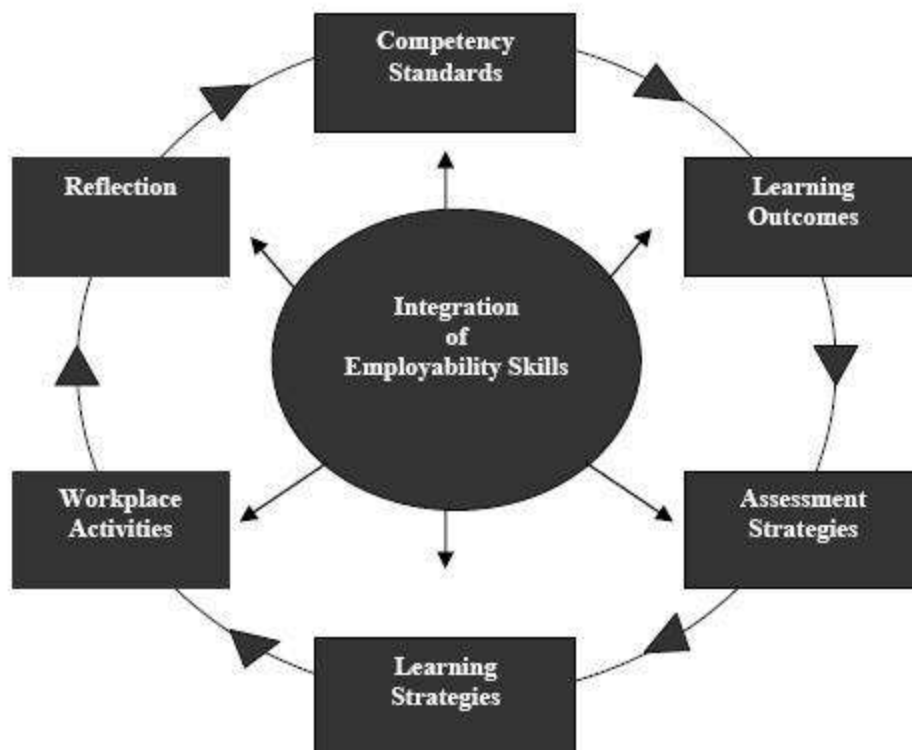
Assessments must meet the criteria set out in the AQTF 2010 *Essential Standards for Initial and Continuing Registration*. For information, the mandatory assessment requirements from Standard 1 from the AQTF 2010 *Essential Standards for Initial and Continuing Registration* are as follows:

1.5 Assessment, including Recognition of Prior Learning (RPL):

- a) meets the requirements of the relevant Training Package or accredited course
- b) is conducted in accordance with the principles of assessment and the rules of evidence
- c) meets workplace and, where relevant, regulatory requirements
- d) is systematically validated.

Assessment of Employability Skills

Employability Skills are integral to workplace competency. As such, they must be considered in the design, customisation, delivery and assessment of vocational education and training programs in an integrated and holistic way, as represented diagrammatically below.



Employability Skills are embedded within each unit of competency, and an Employability Skills Summary is available for each qualification. Training providers must use Employability Skills information in order to design valid and reliable training and assessment strategies. This analysis could include:

- reviewing units of competency to locate relevant Employability Skills and determine how they are applied within the unit
- analysing the Employability Skills Summary for the qualification in which the unit or units are packaged to help clarify relevant industry and workplace contexts and the application of Employability Skills at that qualification outcome
- designing training and assessment to address Employability Skills requirements.

The National Quality Council has endorsed a model for assessing and reporting Employability Skills, which contains further suggestions about good practice strategies in teaching, assessing, learning and reporting Employability Skills. The model is available from <<http://www.training.com.au/>>.

The endorsed approach includes learners downloading qualification specific Employability Skills Summaries for Training Package qualifications from an online repository at <<http://employabilityskills.training.com.au>>

For more information on Employability Skills in Forest and Forest Product Training Packages go to the ForestWorks ISC website at www.forestworks.com.au <http://www..>

Employability Skills are reported on each qualification using the following statement on the qualification testamur: "A summary of the Employability Skills developed through this qualification can be downloaded from <http://employabilityskills.training.com.au> "

Access and Equity

An individual's access to the assessment process should not be adversely affected by restrictions placed on the location or context of assessment beyond the requirements specified in this Training Package: training and assessment must be bias-free.

Under the rules for their development, Training Packages must reflect and cater for the increasing diversity of Australia's VET clients and Australia's current and future workforce. The flexibilities offered by Training Packages should enhance opportunities and potential outcomes for all people so that we can all benefit from a wider national skills base and a shared contribution to Australia's economic development and social and cultural life.

Reasonable Adjustments

It is important that education providers take meaningful, transparent and reasonable steps to consult, consider and implement reasonable adjustments for students with disability. Under the Disability Standards for Education 2005, education providers must make reasonable adjustments for people with disability to the maximum extent that those adjustments do not cause that provider unjustifiable hardship. While 'reasonable adjustment' and 'unjustifiable hardship' are different concepts and involve different considerations, they both seek to strike a balance between the interests of education providers and the interests of students with and without disability.

An adjustment is any measure or action that a student requires because of their disability, and which has the effect of assisting the student to access and participate in education and training on the same basis as students without a disability. An adjustment is reasonable if it achieves this purpose while taking into account factors such as the nature of the student's disability, the views of the student, the potential effect of the adjustment on the student and others who might be affected, and the costs and benefits of making the adjustment.

An education provider is also entitled to maintain the academic integrity of a course or program and to consider the requirements or components that are inherent or essential to its nature when assessing whether an adjustment is reasonable. There may be more than one adjustment that is reasonable in a given set of circumstances; education providers are required to make adjustments that are reasonable and that do not cause them unjustifiable hardship.

The Training Package Guidelines provides more information on reasonable adjustment, including examples of adjustments. Go to <http://www.deewr.gov.au/tpdh/Pages/home.aspx>.

Further Sources of Information

The section provides a listing of useful contacts and resources to assist assessors in planning, designing, conducting and reviewing of assessments against this Training Package.

Contacts

Industry Skills Council www.forestworks.com.au <http://www.forestworks.com.au>

Technical and Vocational Education and
Training (TVET) Australia Limited
Level 21, 390 St Kilda Road, Melbourne
VIC 3150
PO Box 12211, A'Beckett Street Post Office,
Melbourne, Victoria, 8006
Ph: +61 3 9832 8100
Fax: +61 3 9832 8198
Email: sales@tvetaustralia.com.au
Web: www.tvetaustralia.com.au

For information on the TAE10 Training and Education Training Package contact:

Innovation & Business Skills Australia

Telephone: (03) 9815 7000

Facsimile: (03) 9815 7001

Email: virtual@ibsa.org.au

Web: www.ibsa.org.au

General Resources

AQF Implementation Handbook, Fourth Edition 2007. Australian Qualifications Framework Advisory Board, 2002 <www.aqf.edu.au>

Australian Quality Training Framework (AQTF) and AQTF 2010 Users' Guide to the Essential Standards for Registration –
<http://www.training.com.au/pages/menuitem5cbe14d51b49dd34b225261017a62dbc.aspx>

For general information and resources go to <http://www.training.com.au/>

The National Register is an electronic database providing comprehensive information about RTOs, Training Packages and accredited courses - <www.ntis.gov.au>

The Training Package Development Handbook site provides National Quality Council policy for the development of Training Packages. The site also provides guidance material for the application of that policy, and other useful information and links.

<http://www.deewr.gov.au/Skills/Overview/Policy/TPDH/Pages/main.aspx>

Assessment Resources

Registered training organisations (RTOs) are at the forefront of vocational education and training (VET) in Australia. They translate the needs of industry into relevant, quality, client-focussed training and assessment.

RTOs should strive for innovation in VET teaching and learning practices and develop highly flexible approaches to assessment which take cognisance of specific needs of learners, in order to improve delivery and outcomes of training.

Resources can be purchased or accessed from:

- TVET Australia – provides an integrated service to enable users of the national training system to identify and acquire training materials, identify copyright requirements and enter licenses for use of that material consistent with the scope and direction of the NQC.

<http://www.productservices.tvetaustralia.com.au/>

ForestWorks Ltd

PO Box 612

NORTH MELBOURNE VICTORIA 3051

Ph: 1800 177 001 or +61 3 9321 3500

Fax: +61 3 9326 7800

Email: forestworks@forestworks.com.au <http://www.forestworks.com.au>

Web: www.forestworks.com.au <http://www.forestworks.com.au>

Competency Standards

| |
|--|
| Competency Standards - Industry Contextualisation |
| |